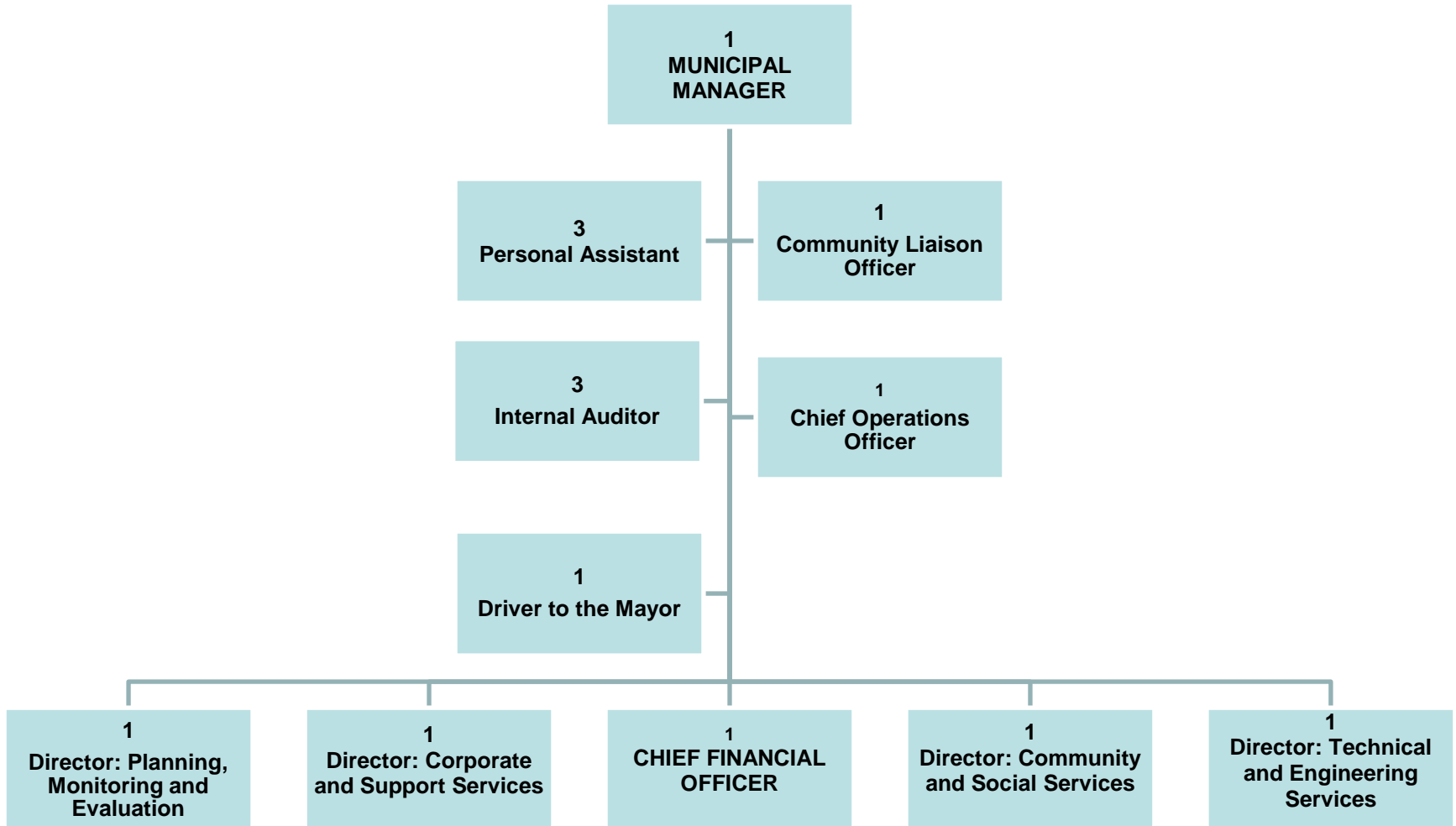
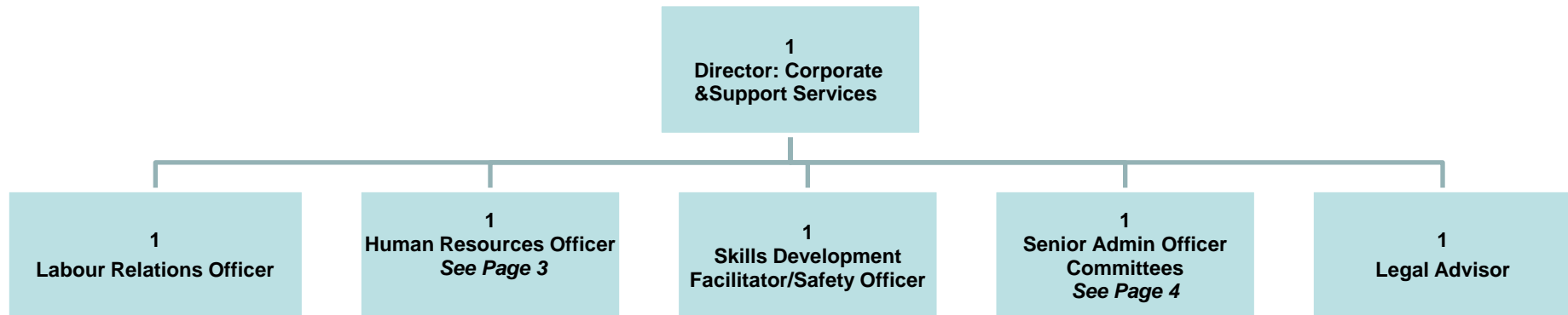


SENQU MUNICIPALITY

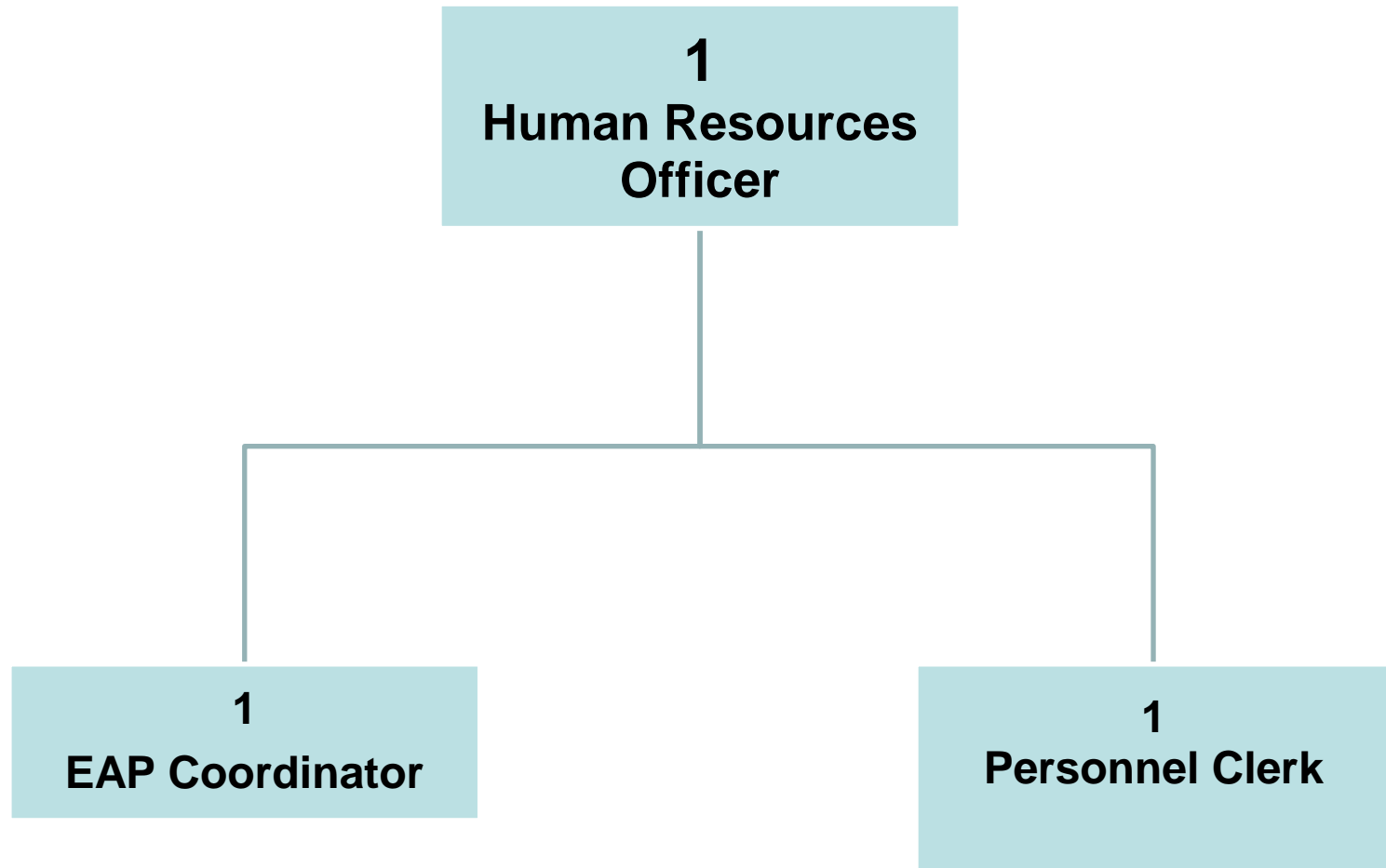
TOP STRUCTURE



DIRECTOR: CORPORATE & SUPPORT SERVICES

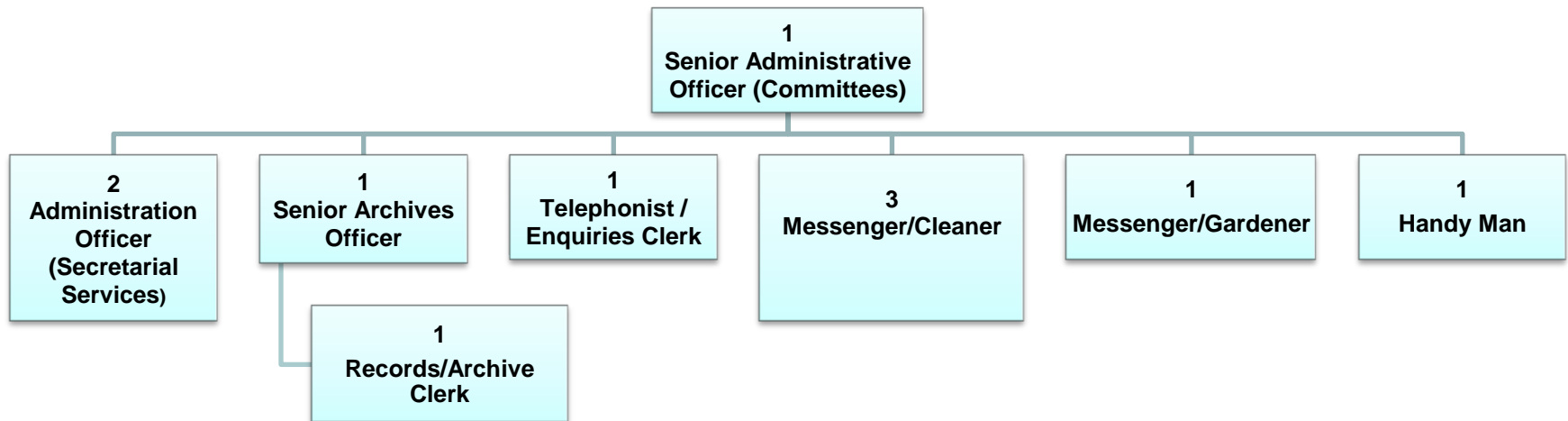


CORPORATE AND SUPPORT SERVICES : HUMAN RESOURCES



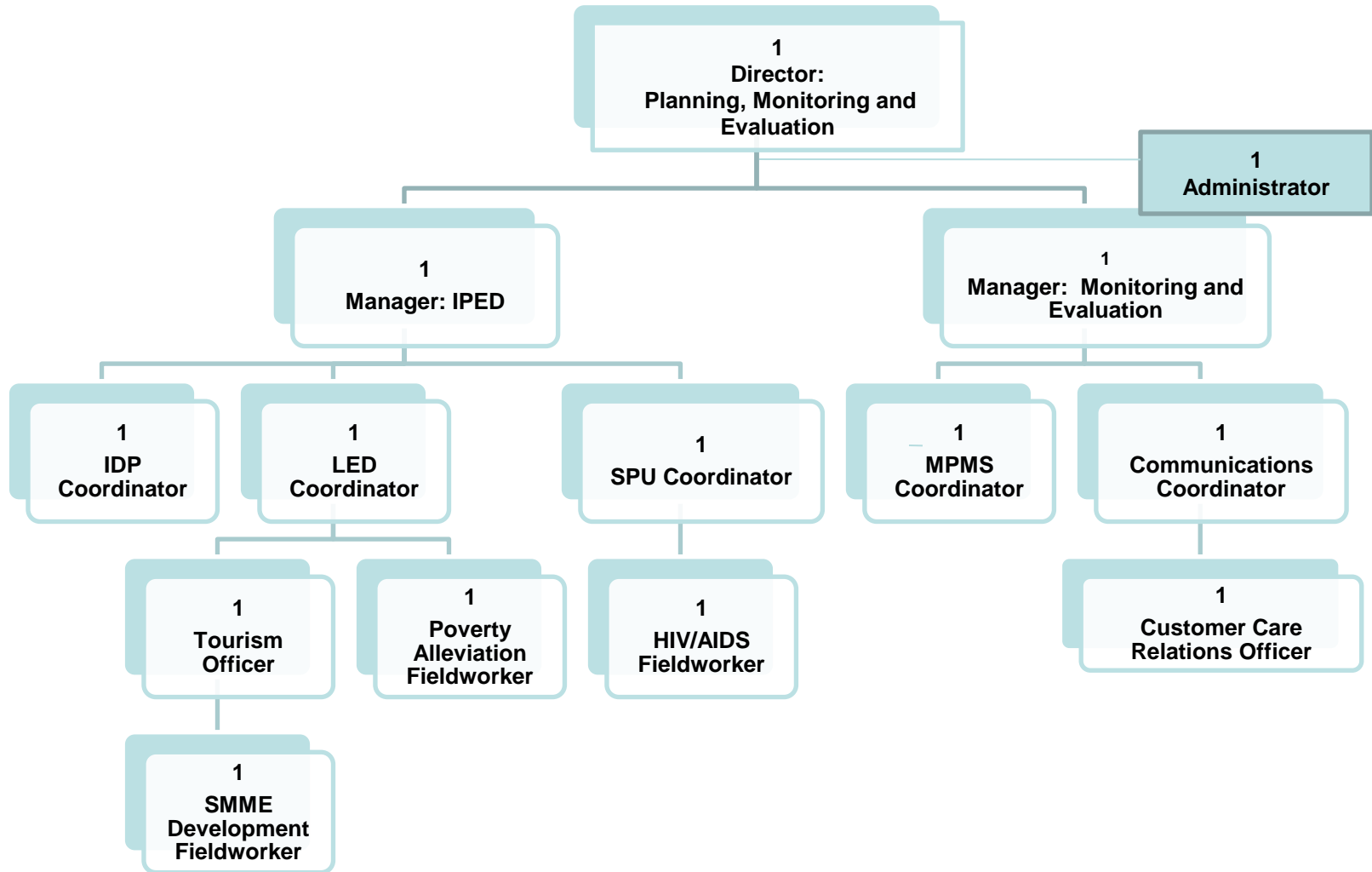
.....
Initial

CORPORATE & SUPPORT SERVICES: Administrative

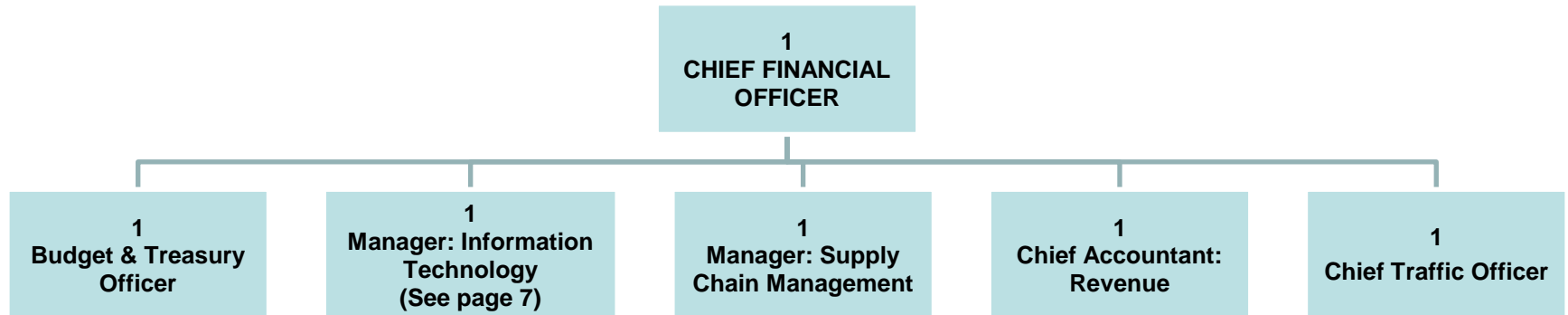


.....
Initial

Office Of The Municipal Manager: Planning, Monitoring and Evaluation



BUDGET & TREASURY OFFICE



.....
Initial

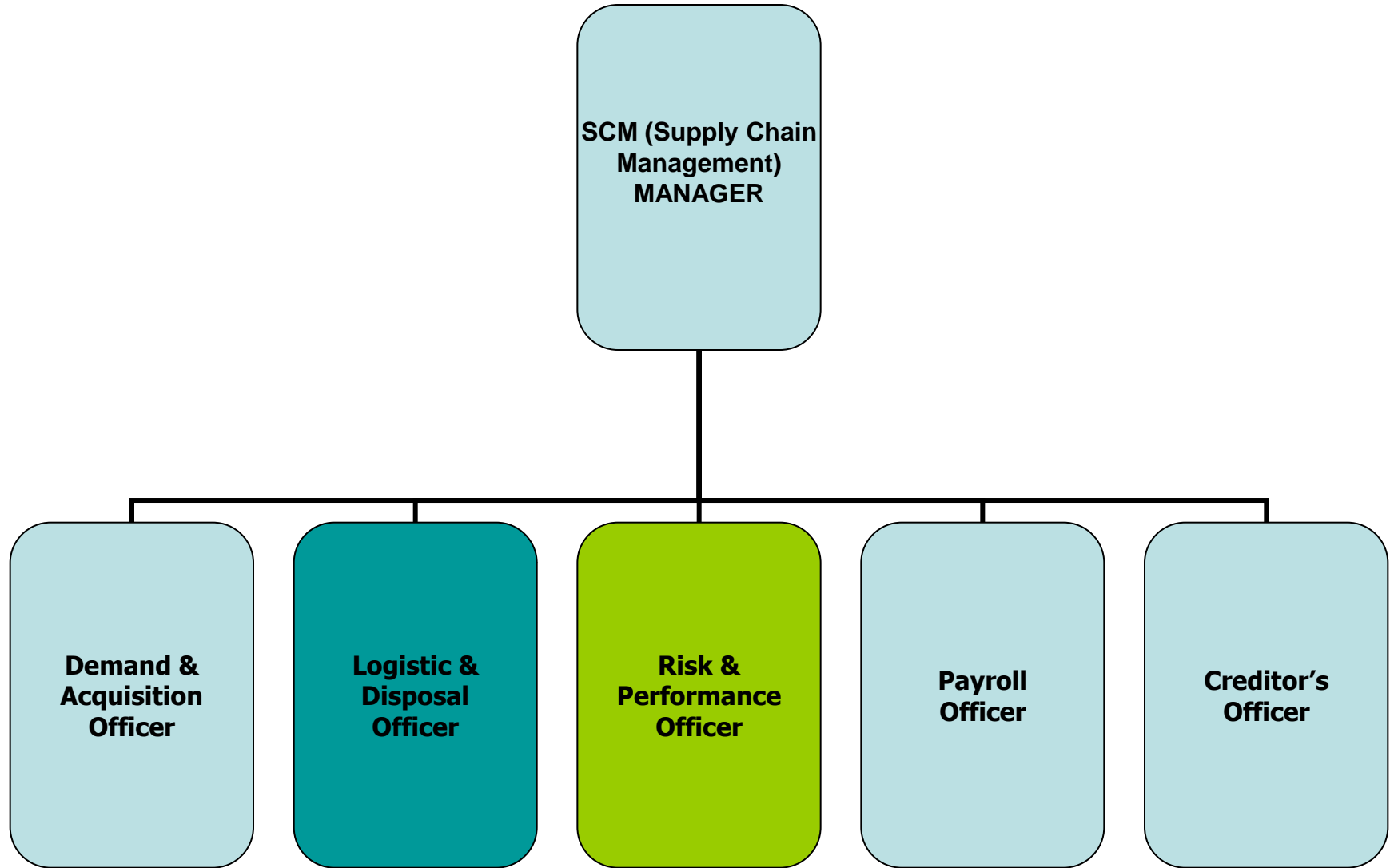
BUDGET & TREASURY DEPARTMENT

**IT (Information
Technology)
MANAGER**

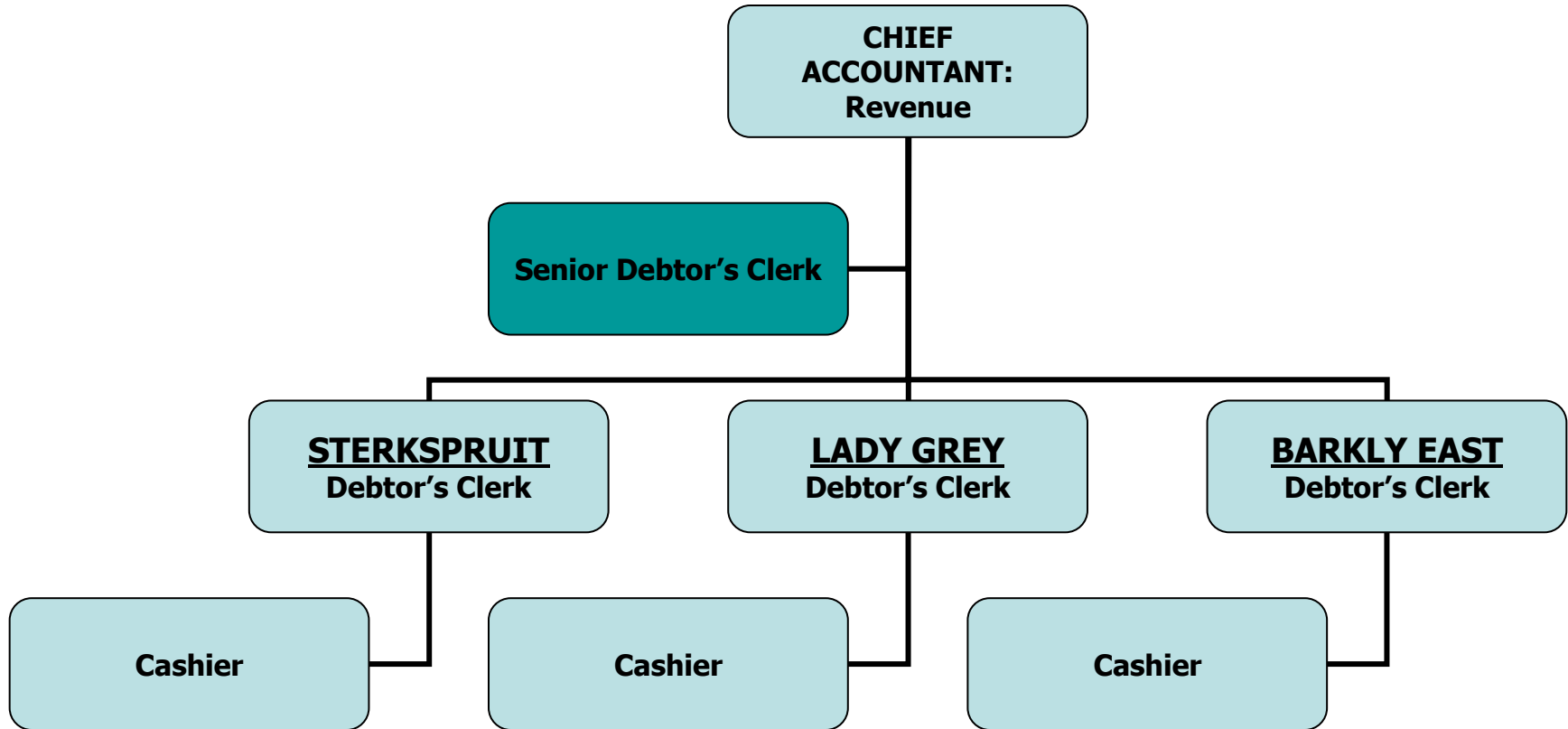
**IT (Information
Technology)
TECHNICIAN**

.....
Initial

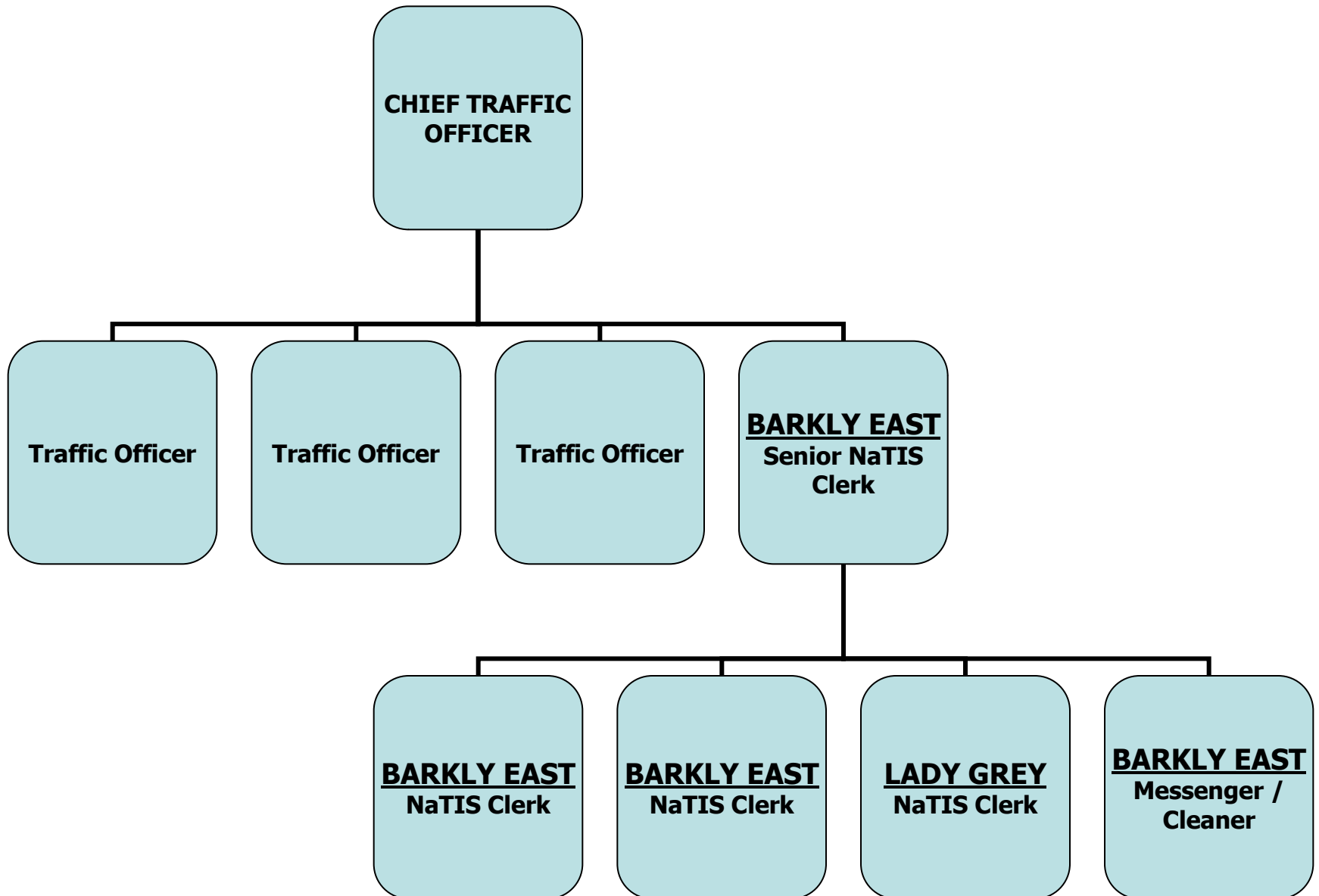
BUDGET & TREASURY DEPARTMENT



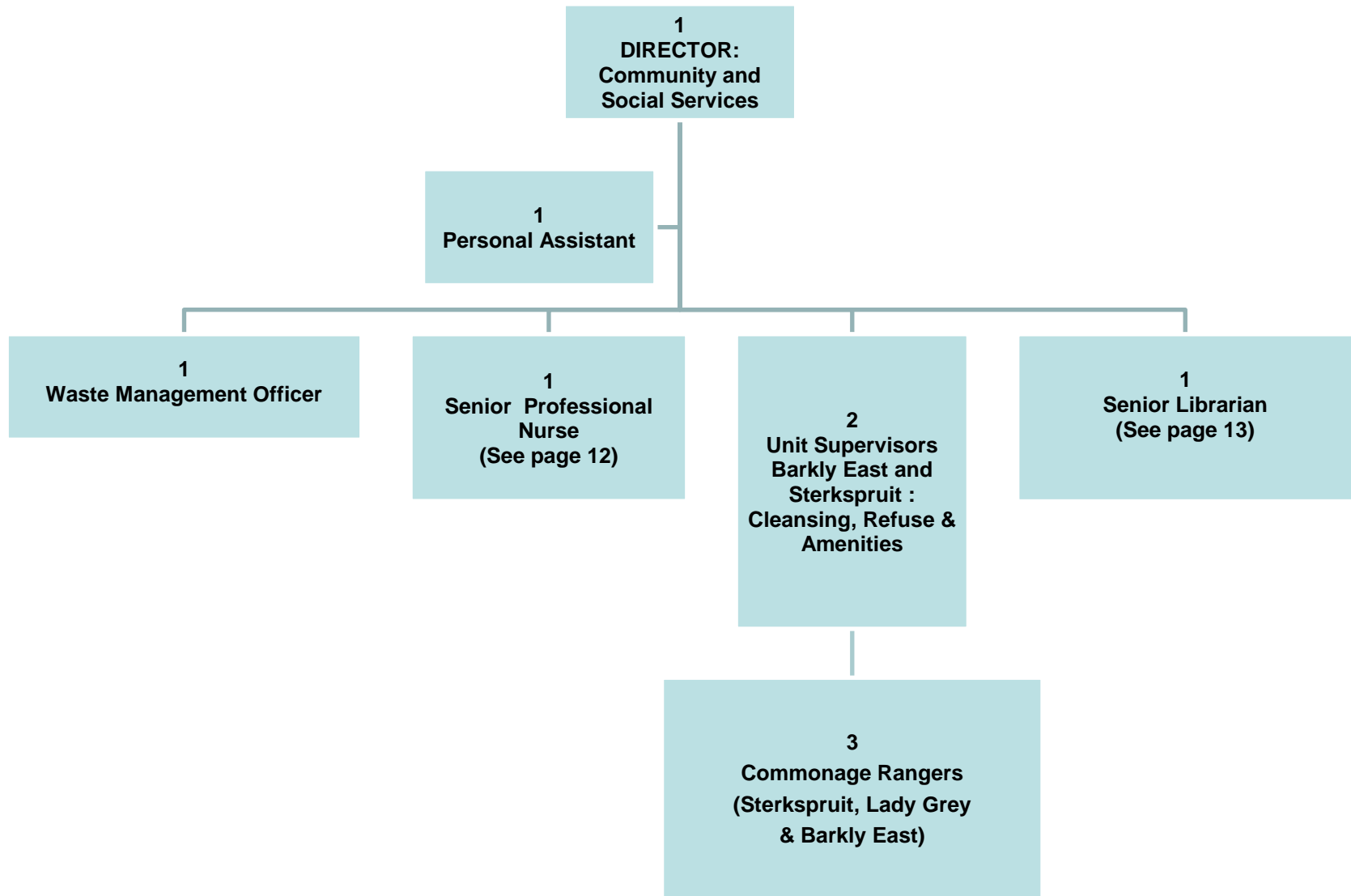
BUDGET & TREASURY DEPARTMENT



BUDGET & TREASURY DEPARTMENT



COMMUNITY & SOCIAL SERVICES



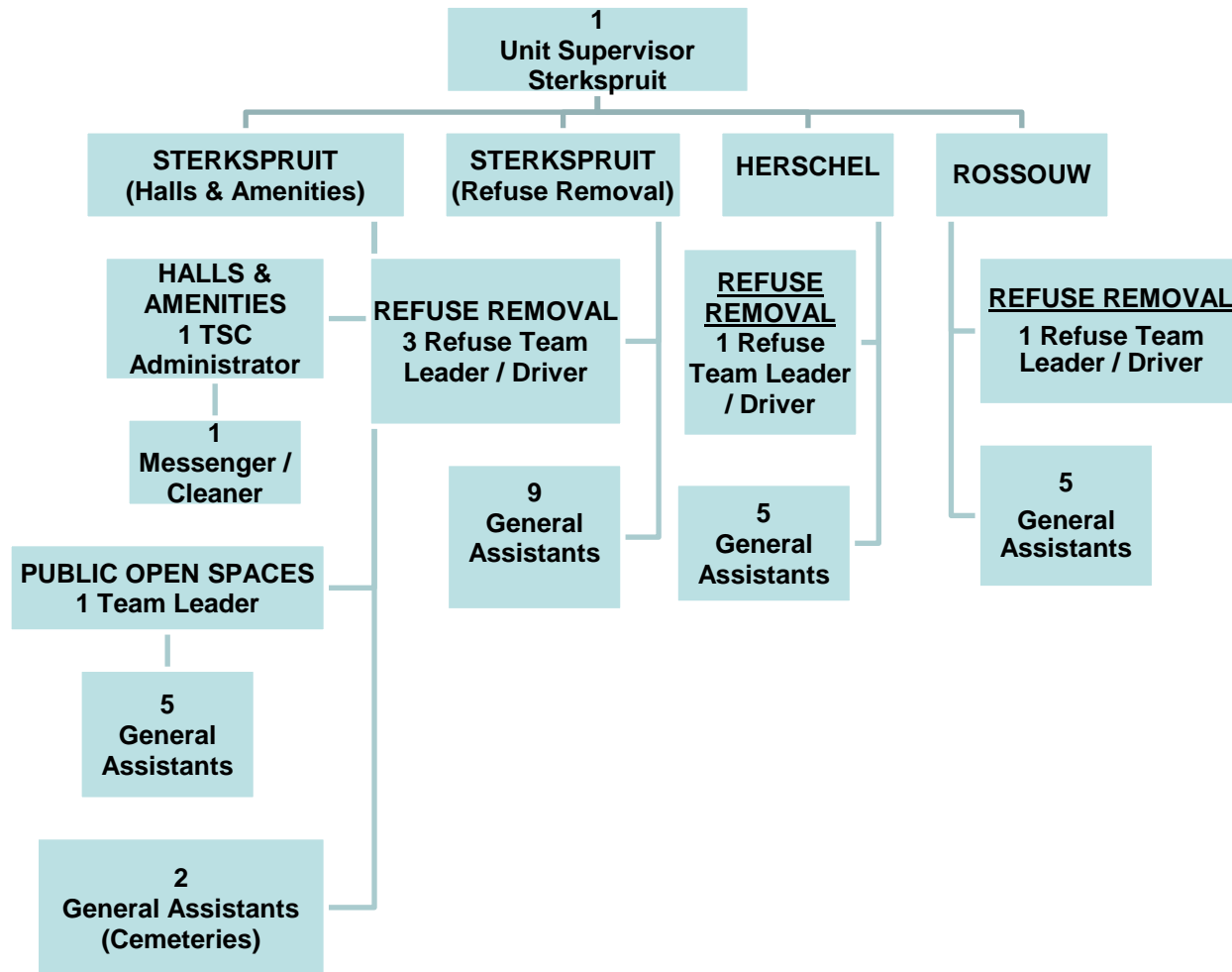
COMMUNITY & SOCIAL SERVICES: Health



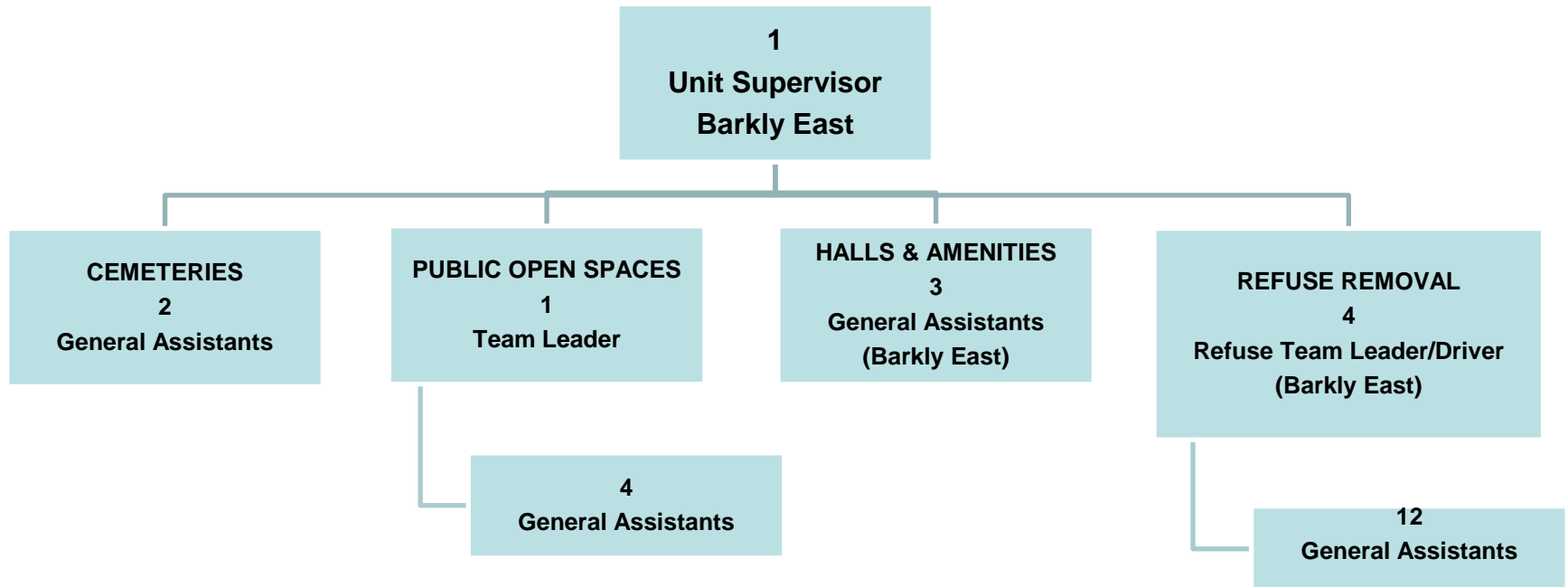
COMMUNITY & SOCIAL SERVICES: Social Services



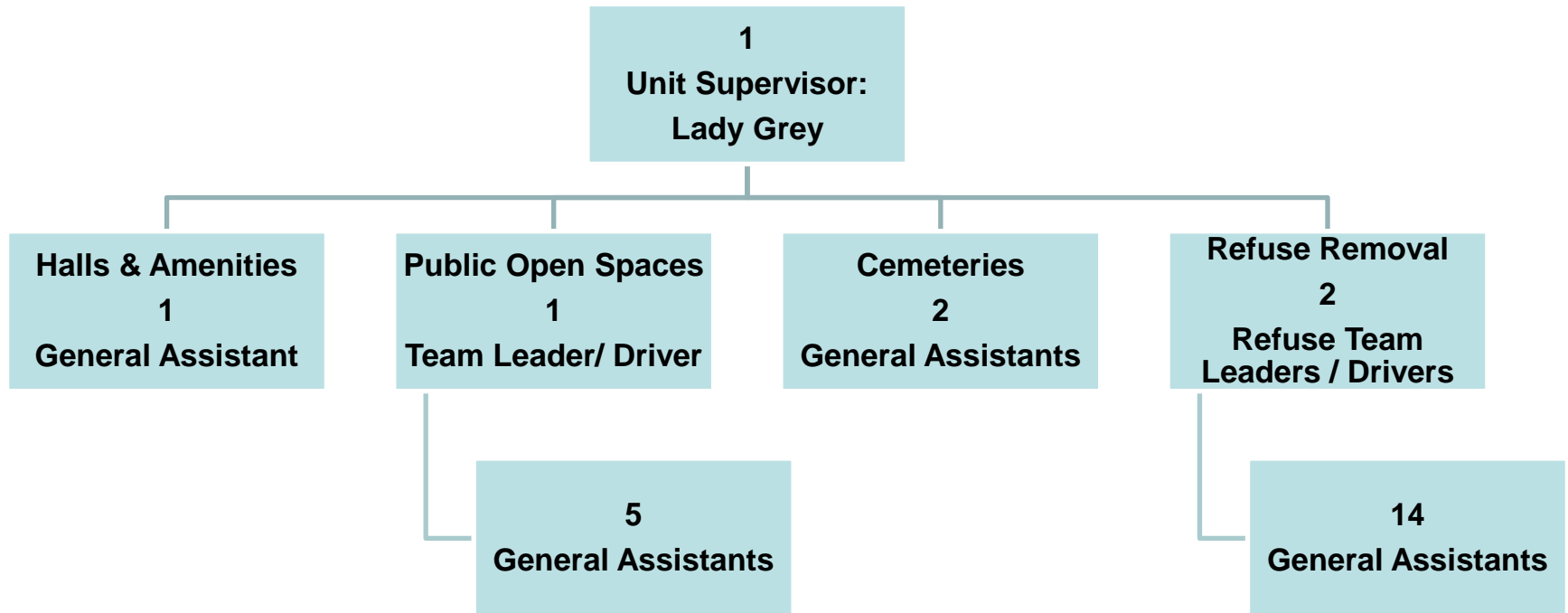
COMMUNITY & SOCIAL SERVICES : Cleansing, Refuse Removal & Public Amenities : Sterkspruit



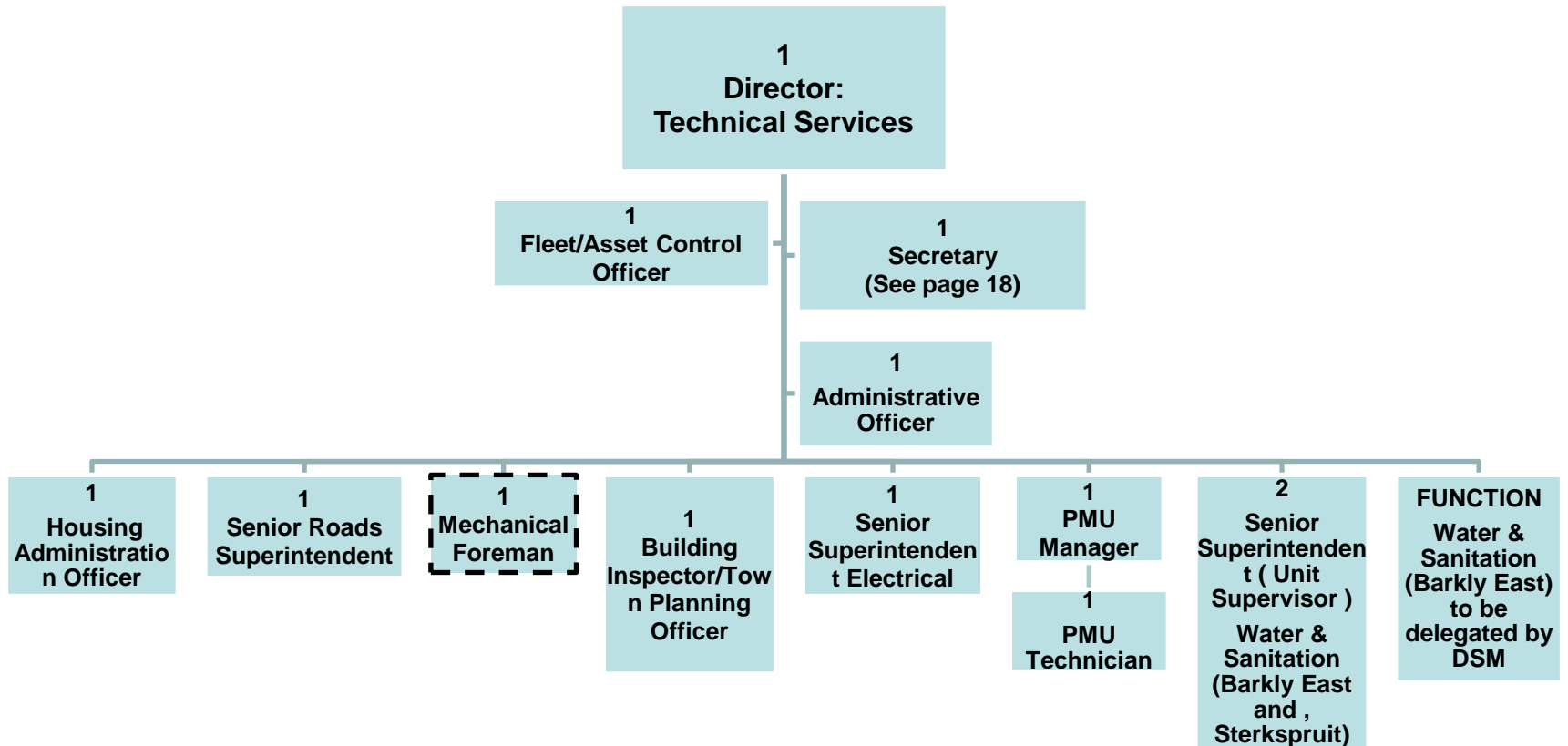
COMMUNITY & SOCIAL SERVICES : Cleansing, Refuse Removal & Public Amenities : Barkly East



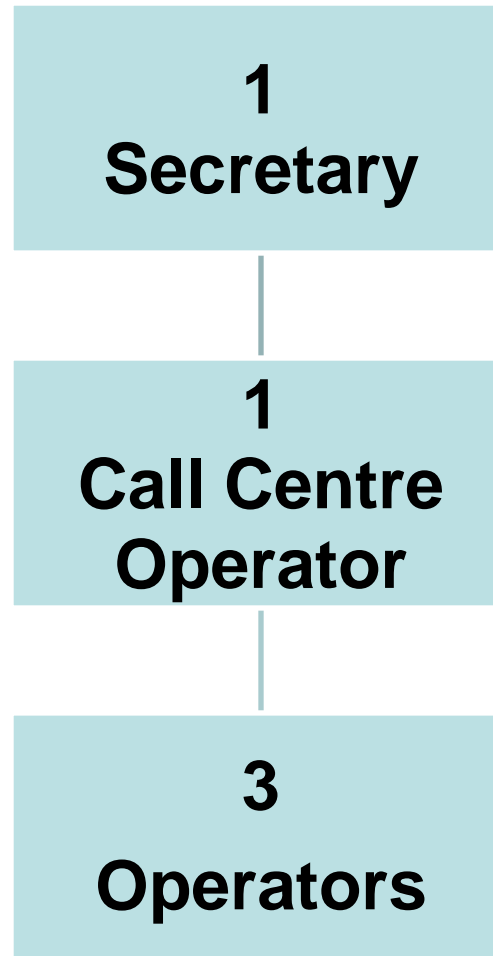
COMMUNITY & SOCIAL SERVICES : Cleansing, Refuse Removal & Public Amenities : Lady Grey



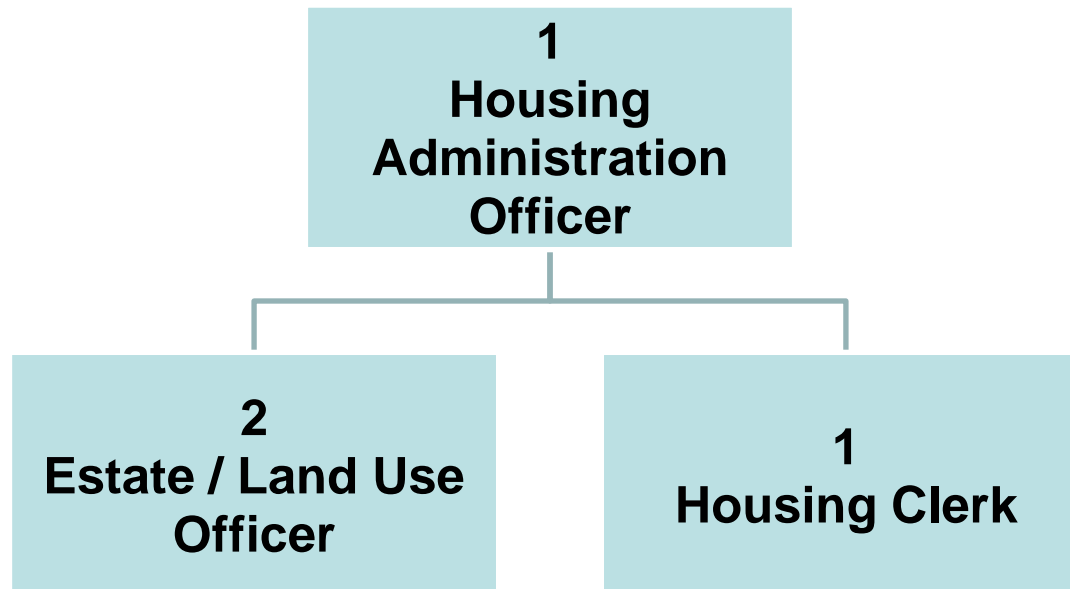
Director: Technical Services: Administration



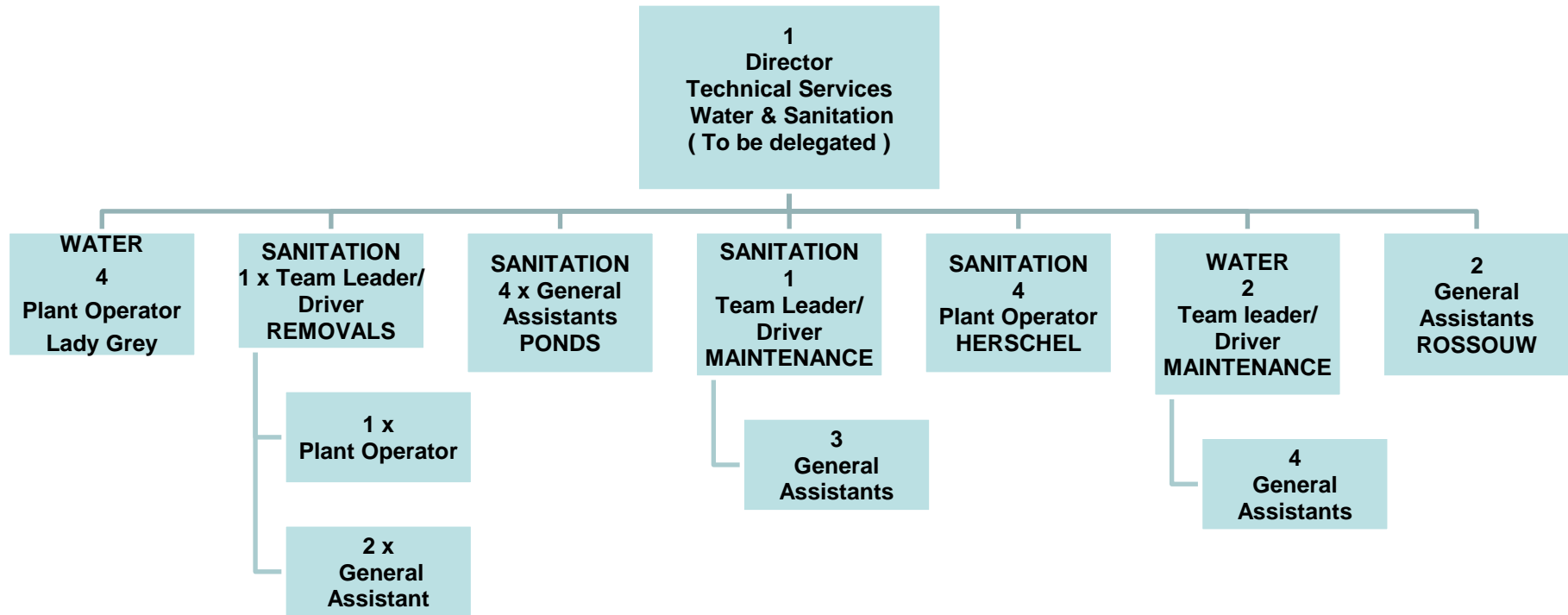
Technical & Engineering Services: Administration



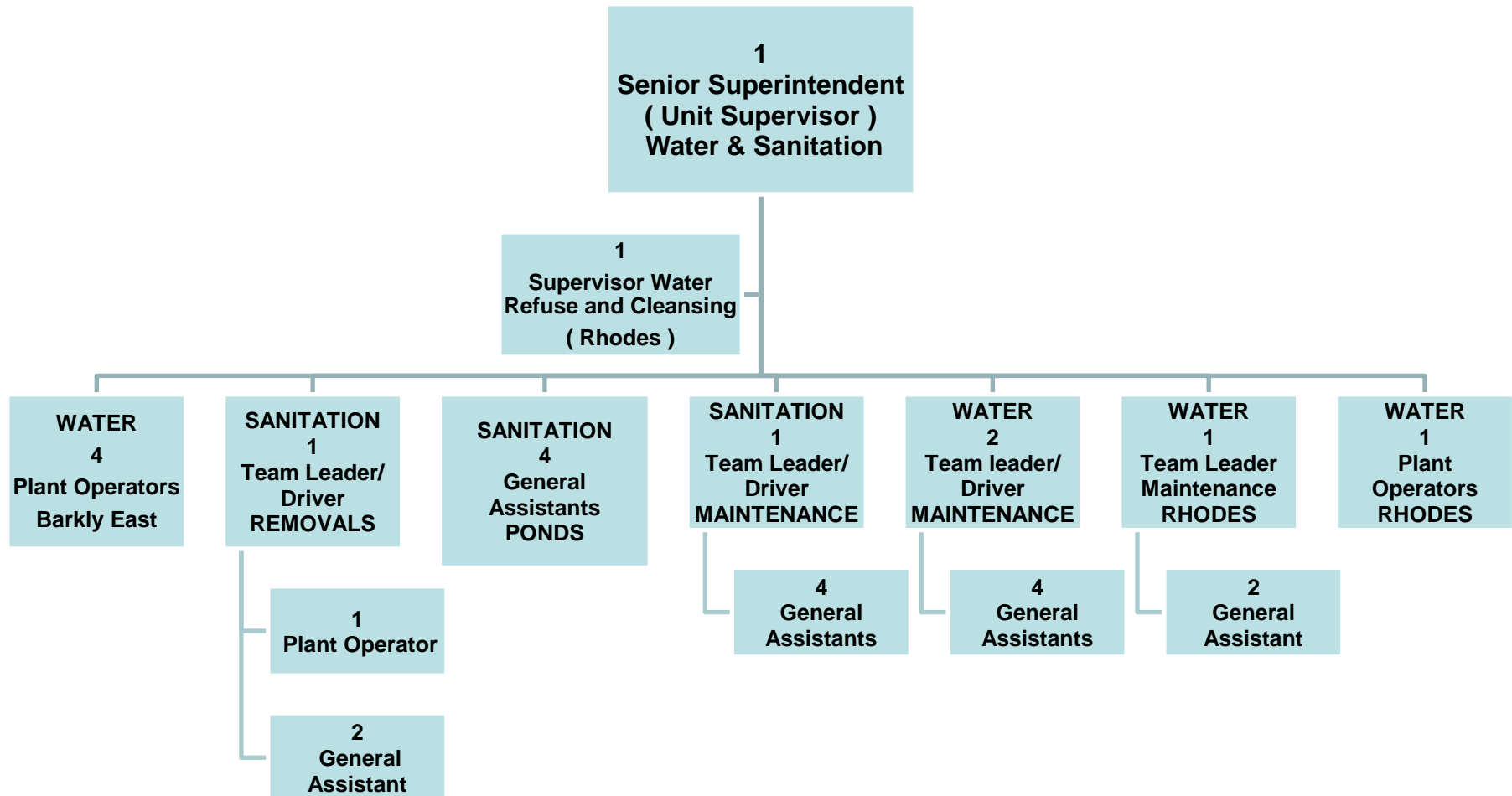
Technical & Engineering Services: Housing Administration



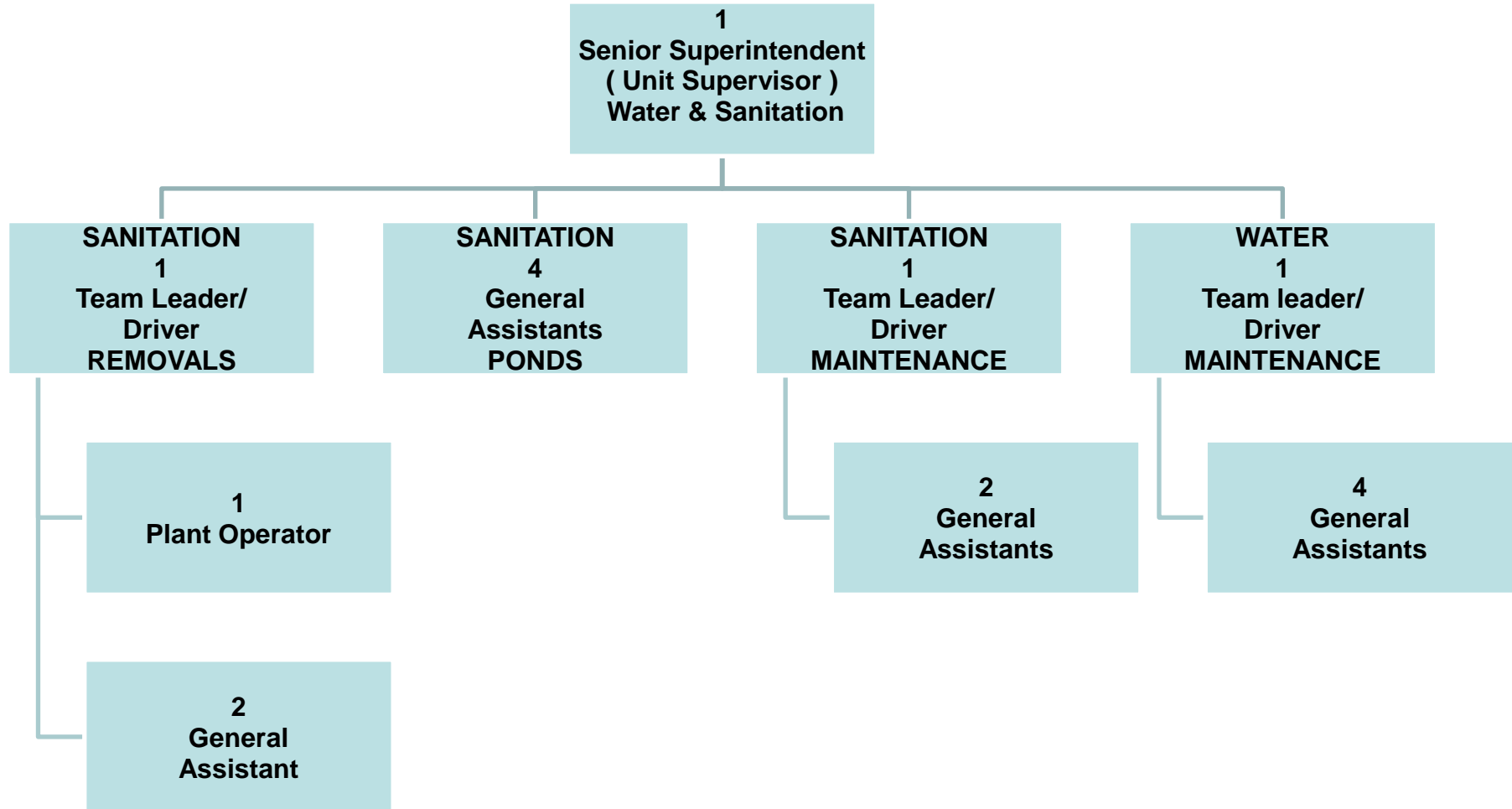
Technical Services: LADY GREY WATER & SANITATION



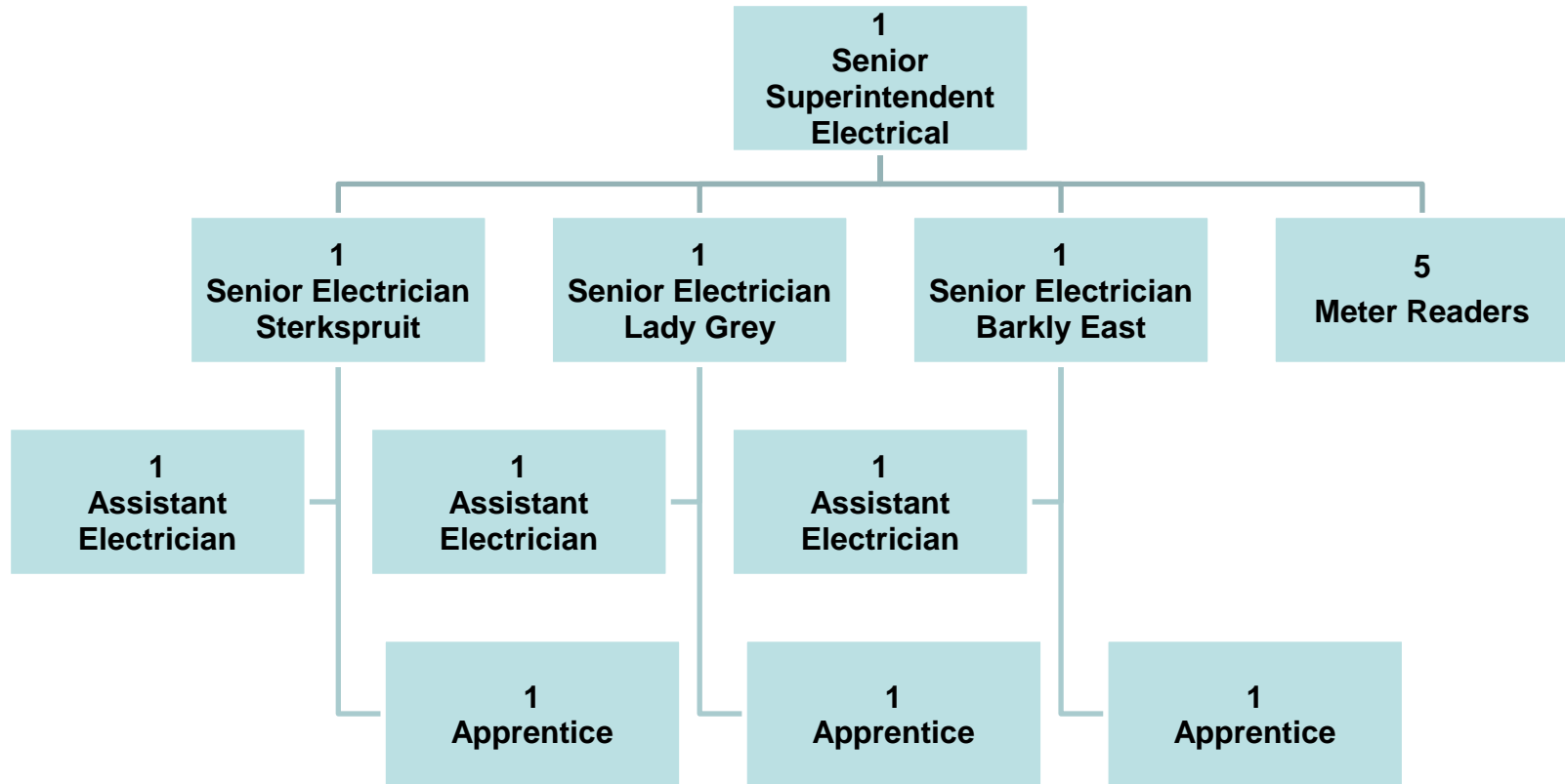
Technical Services: BARKLY EAST WATER & SANITATION



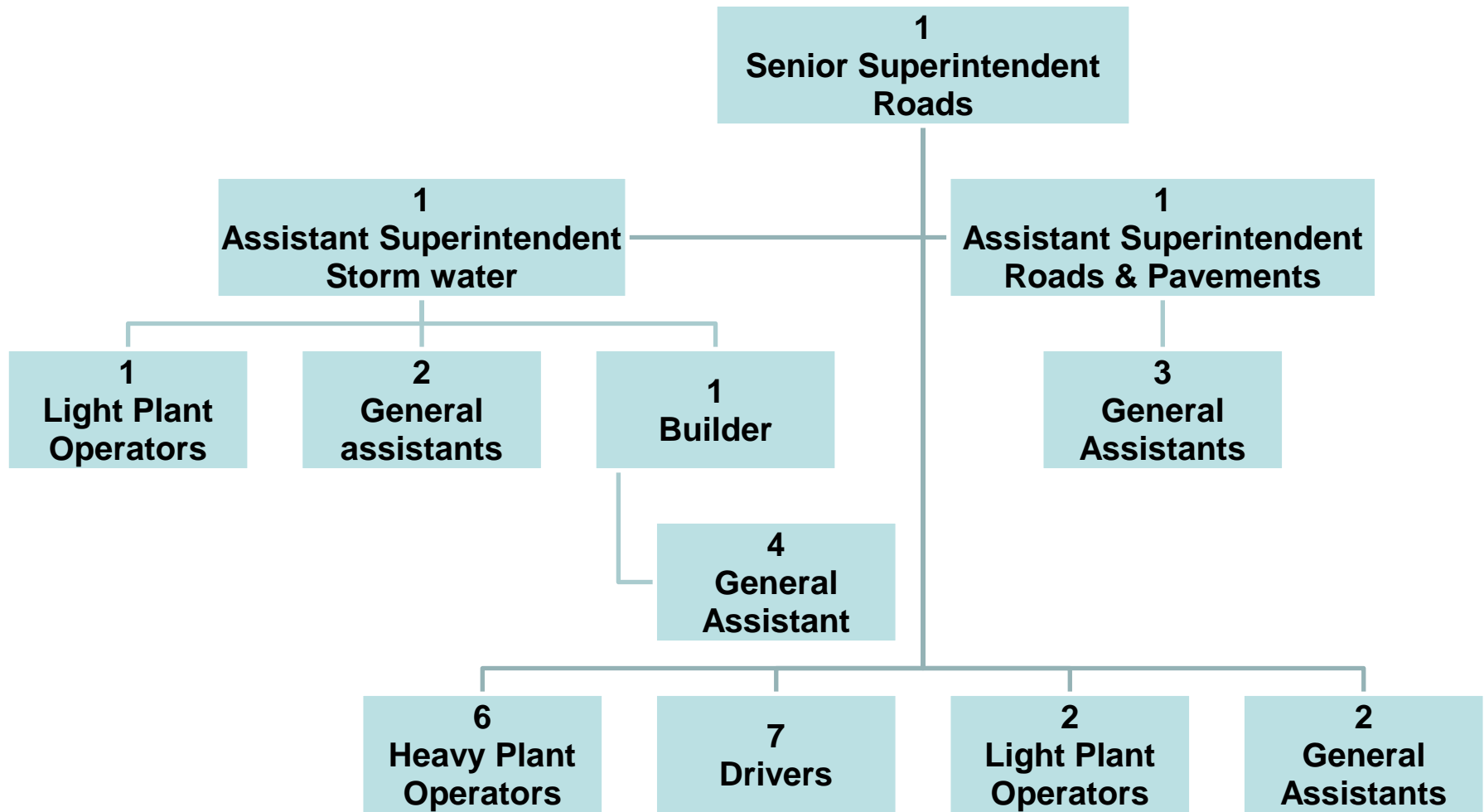
Technical Services: STERKSPRUIT WATER & SANITATION



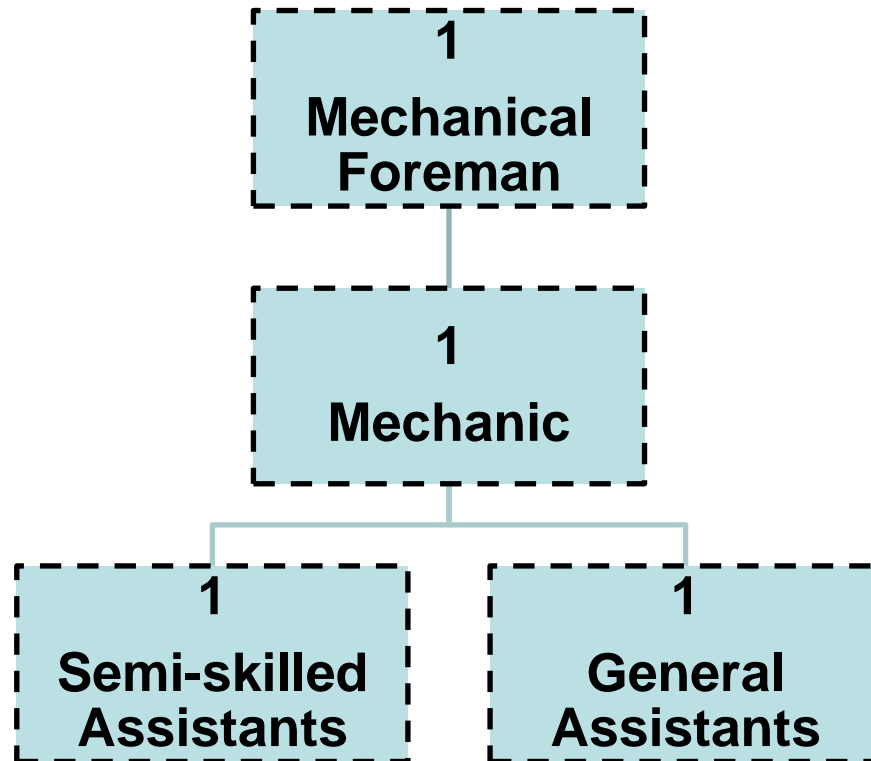
Technical Services: ELECTRICITY



Technical Services: Roads



Technical Services: Mechanical



This is the true copy of Senqu Municipality as adopted by the Municipal Council on 31 March 2010.

Signed by: Mayor

Municipal Manager

.....

.....