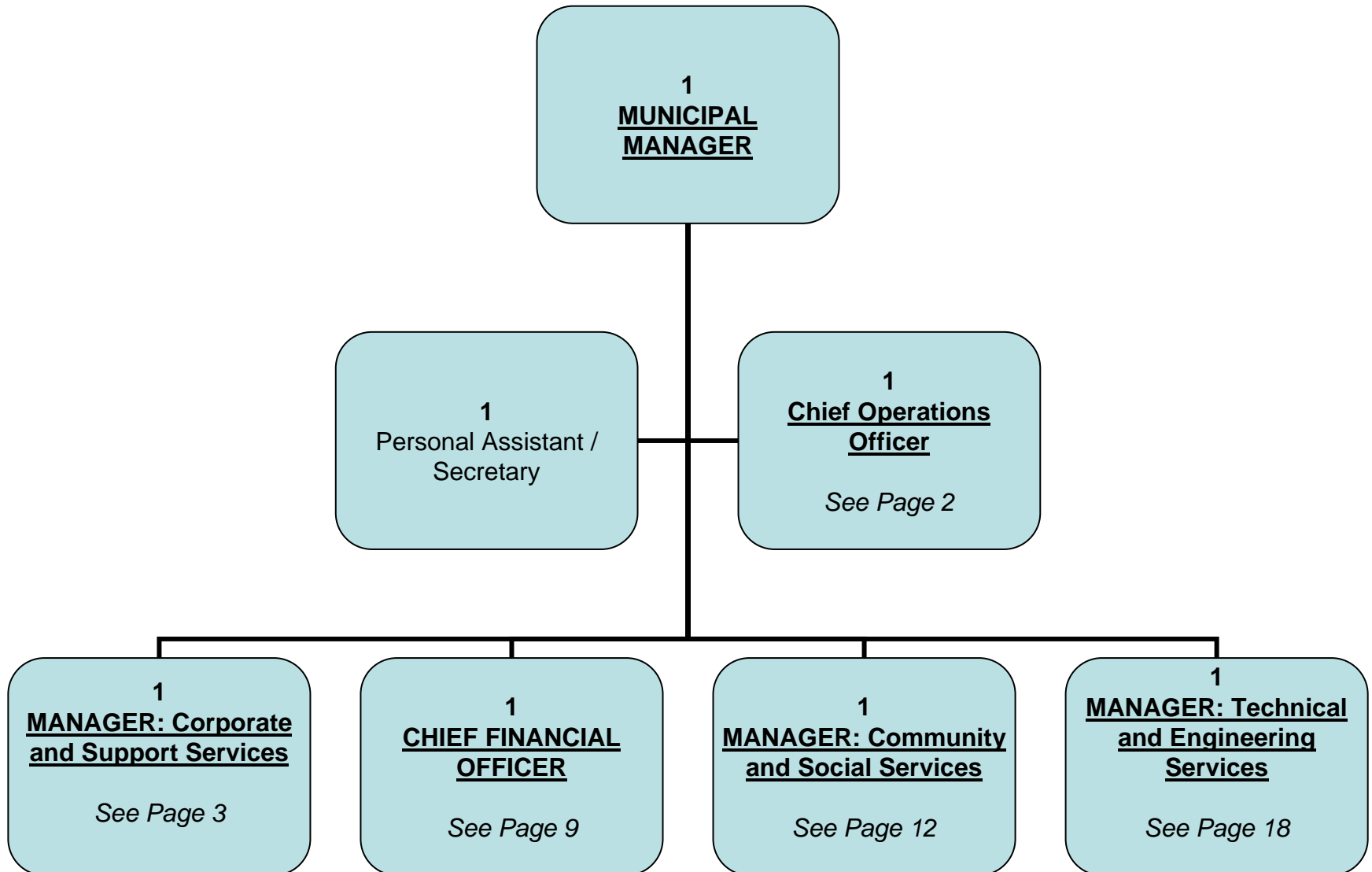
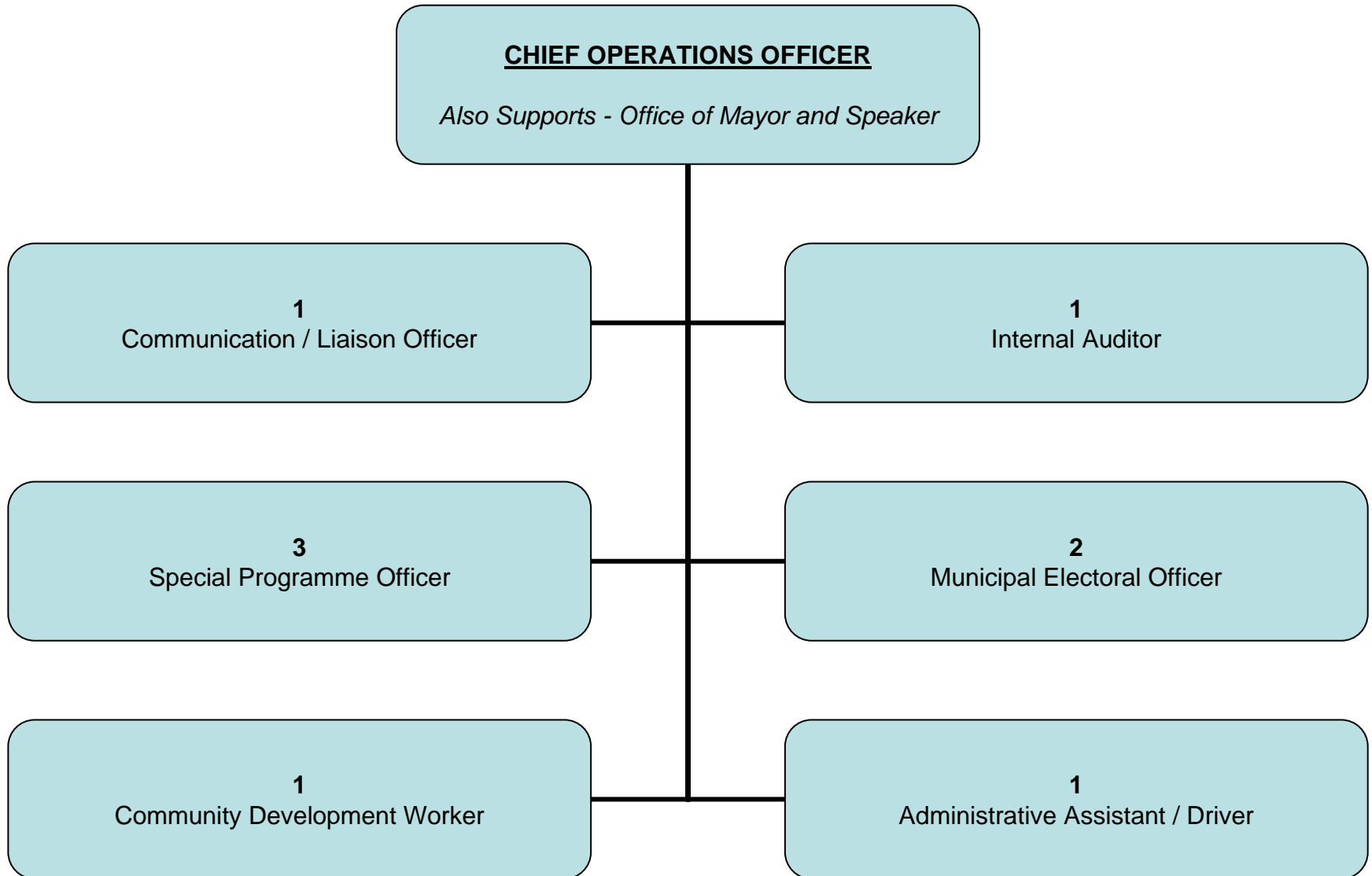


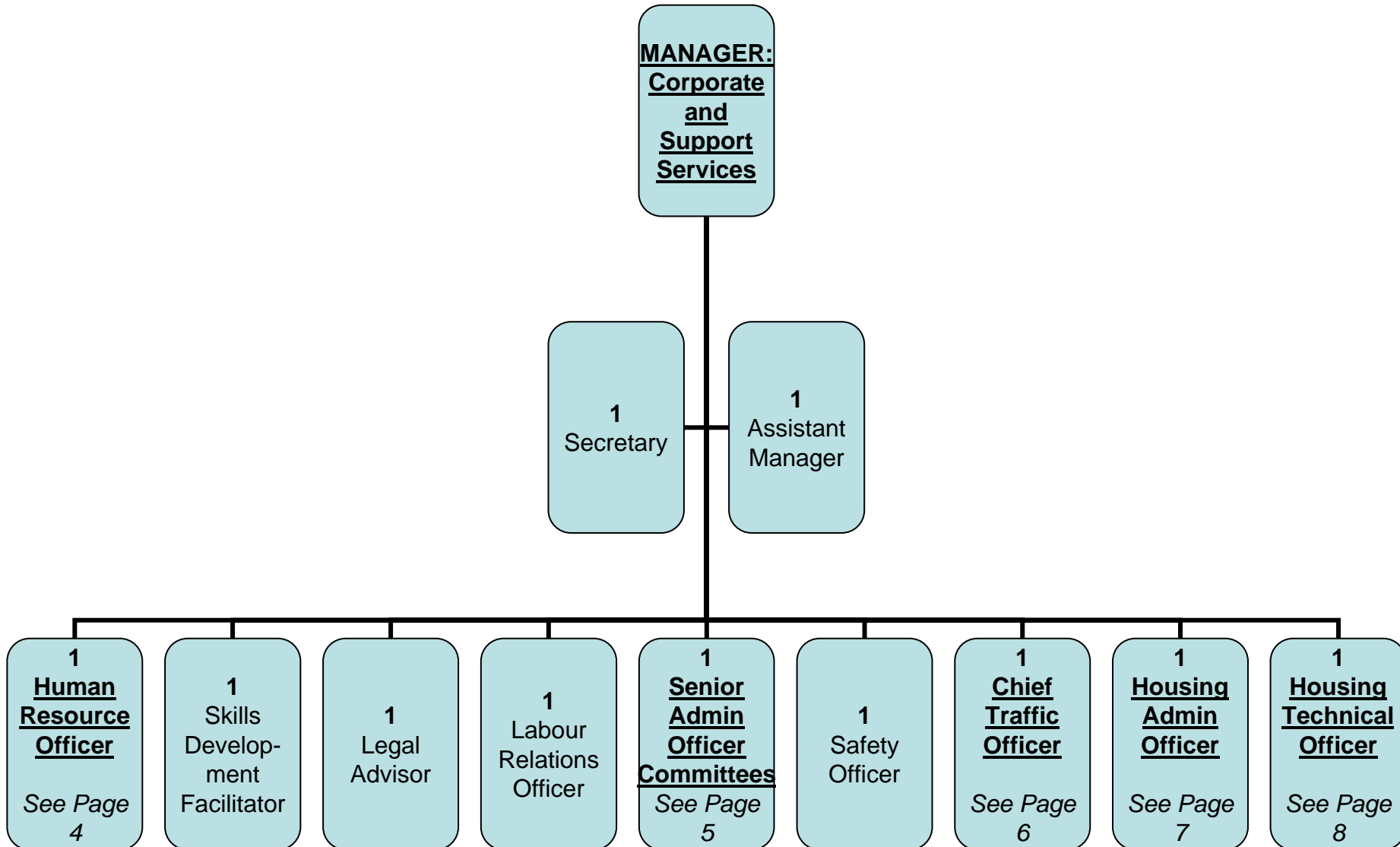
TOP STRUCTURE



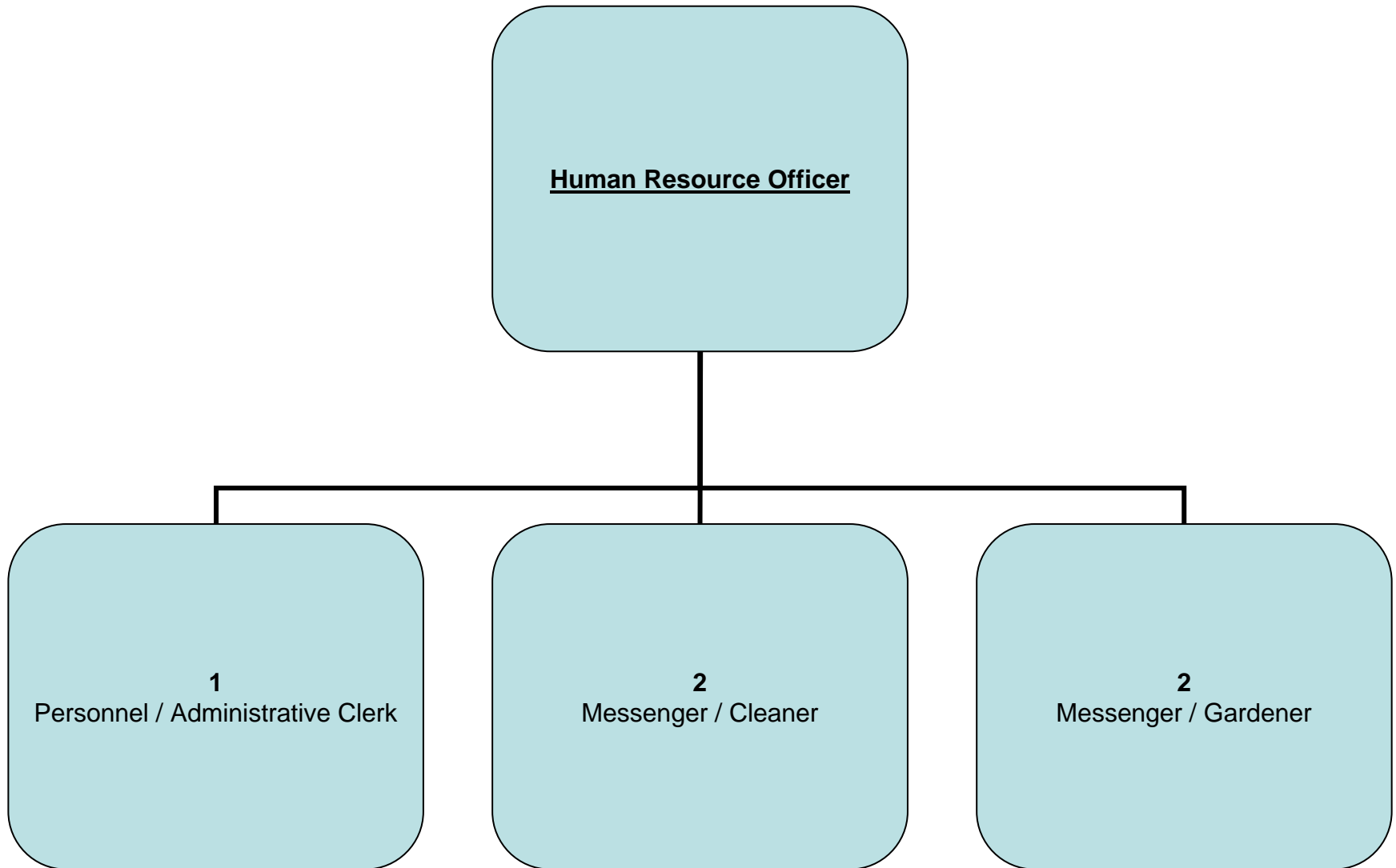
OFFICE of MUNICIPAL MANAGER



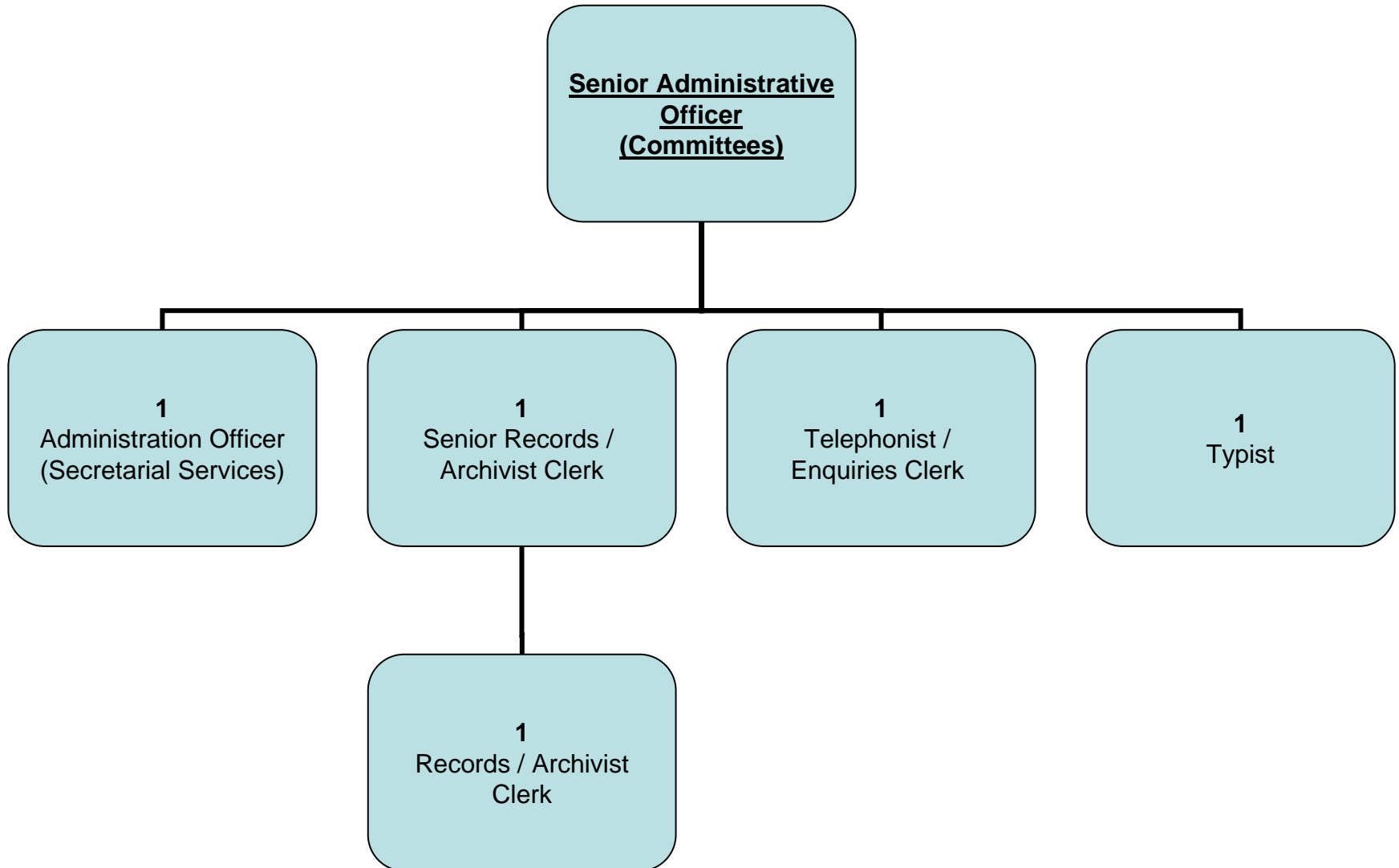
MANAGER: CORPORATE & SUPPORT SERVICES



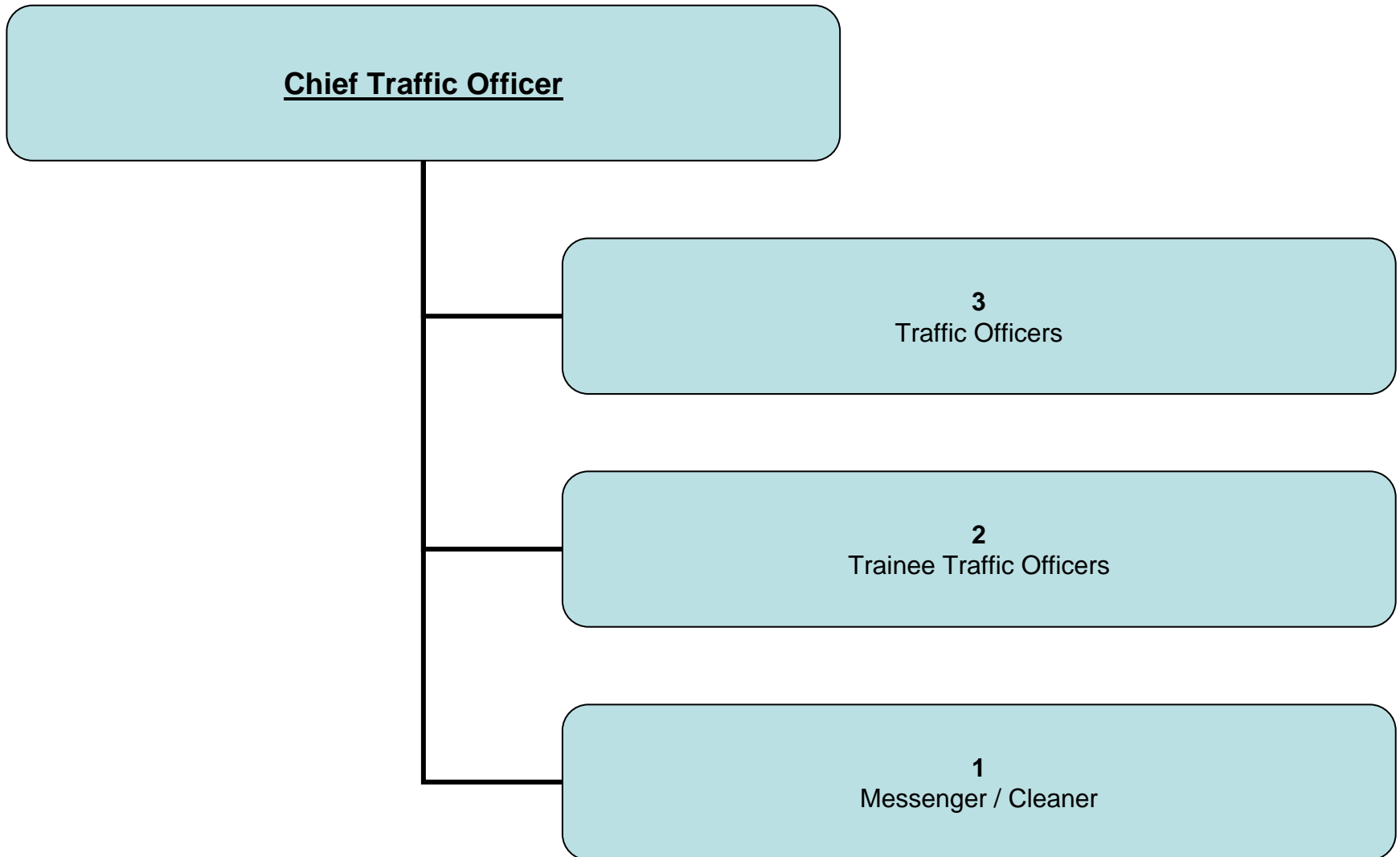
CORPORATE & SUPPORT SERVICES: Human Resources



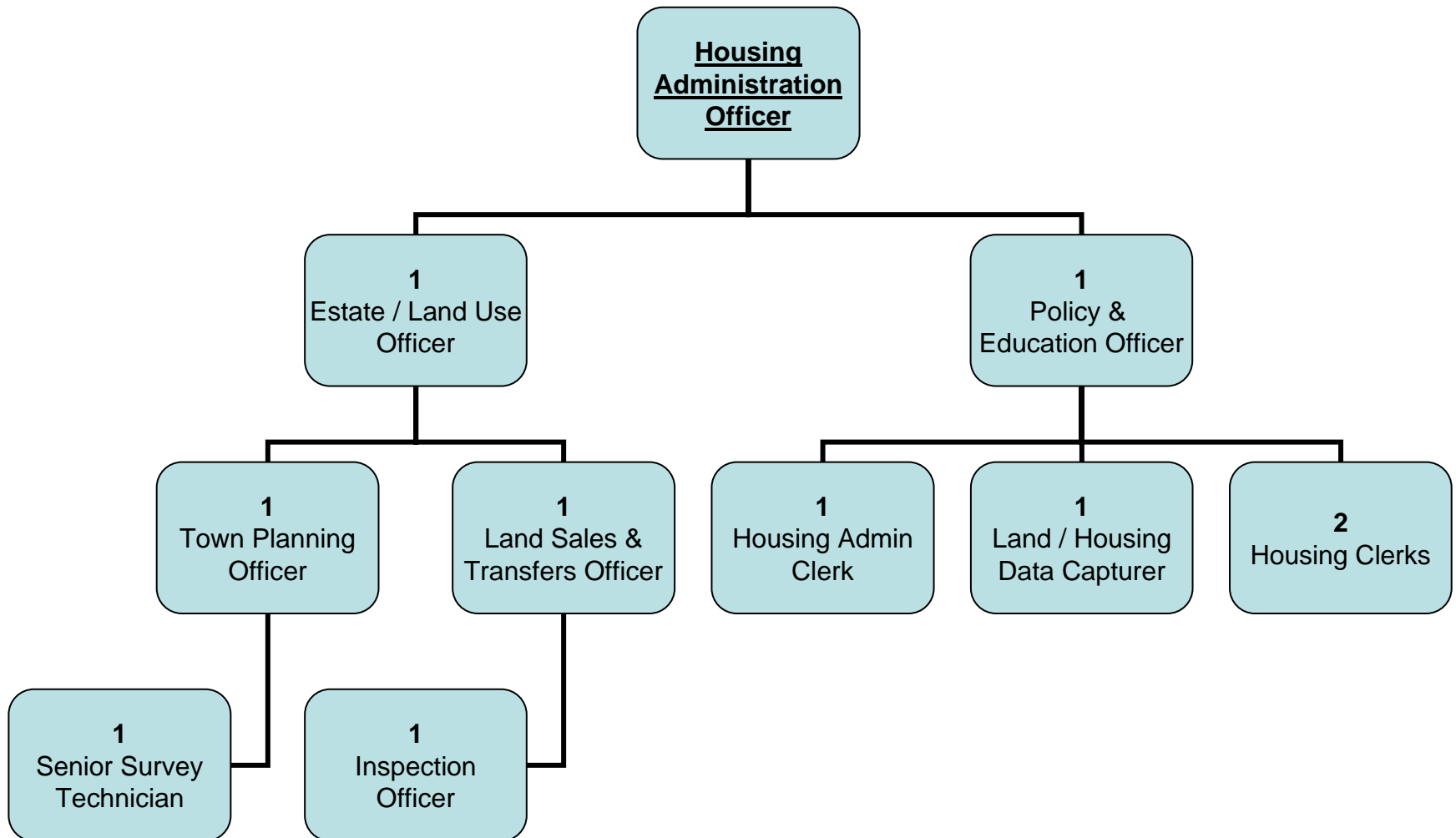
CORPORATE & SUPPORT SERVICES: Administrative



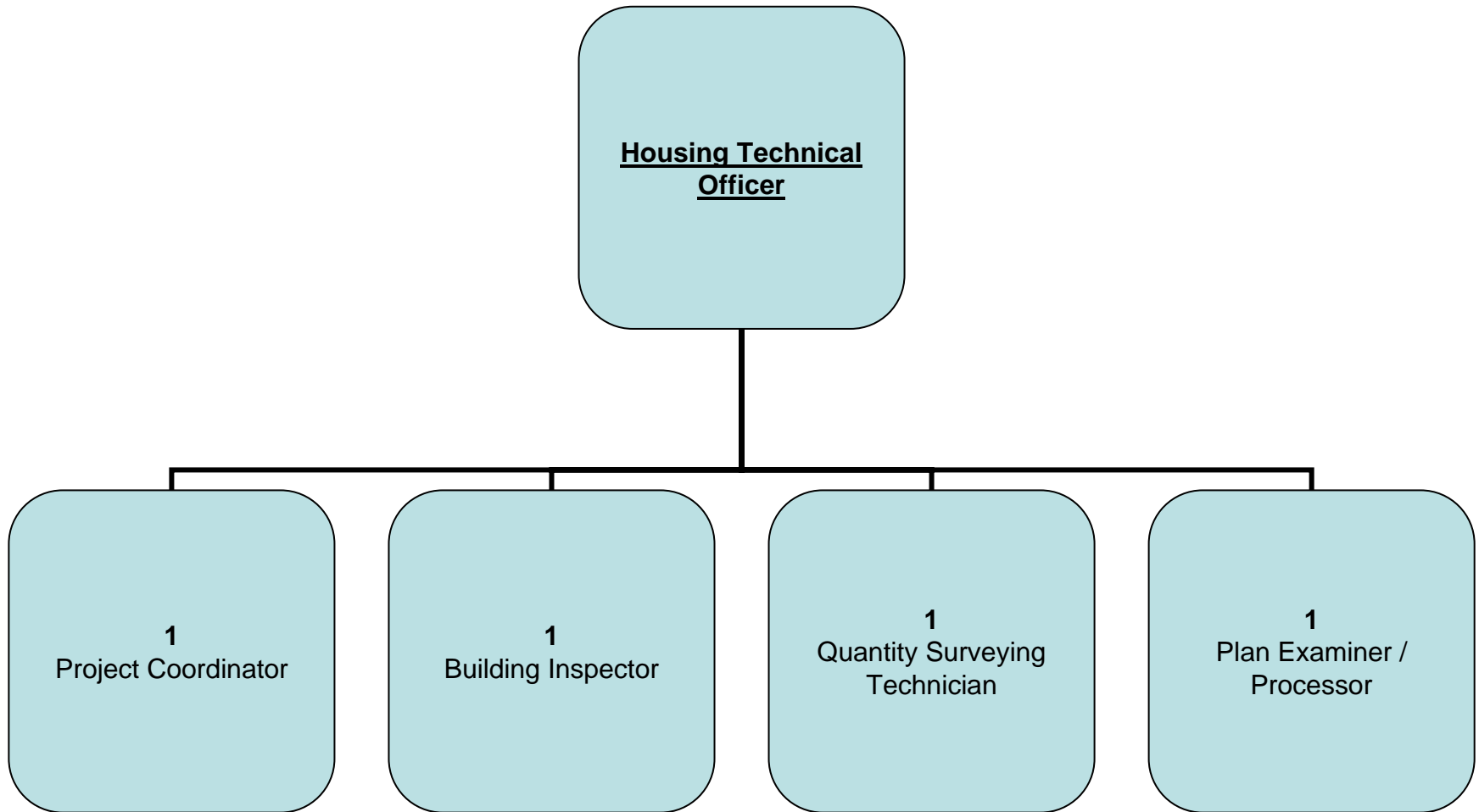
CORPORATE & SUPPORT SERVICES: Traffic



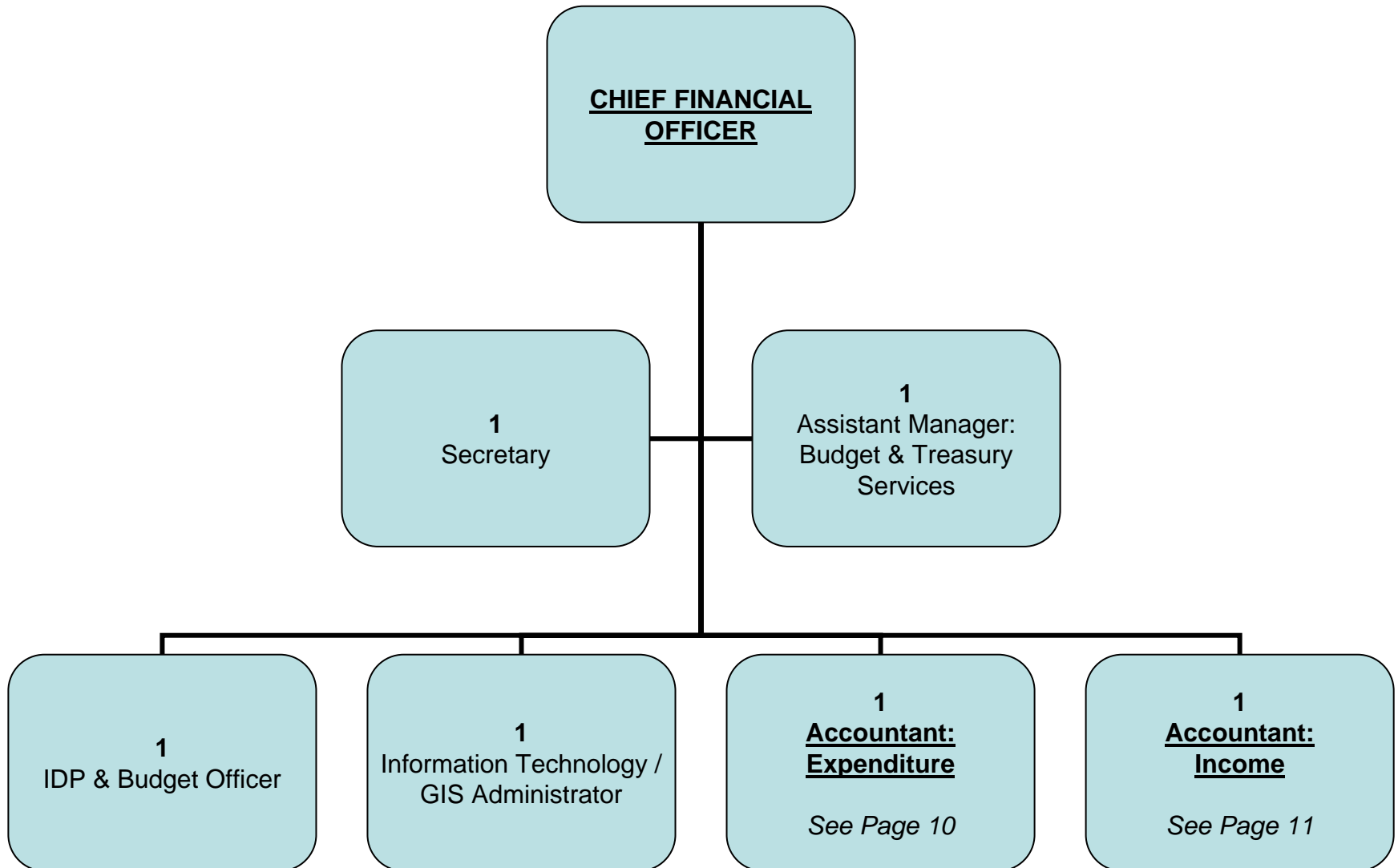
CORPORATE & SUPPORT SERVICES: Housing Administration



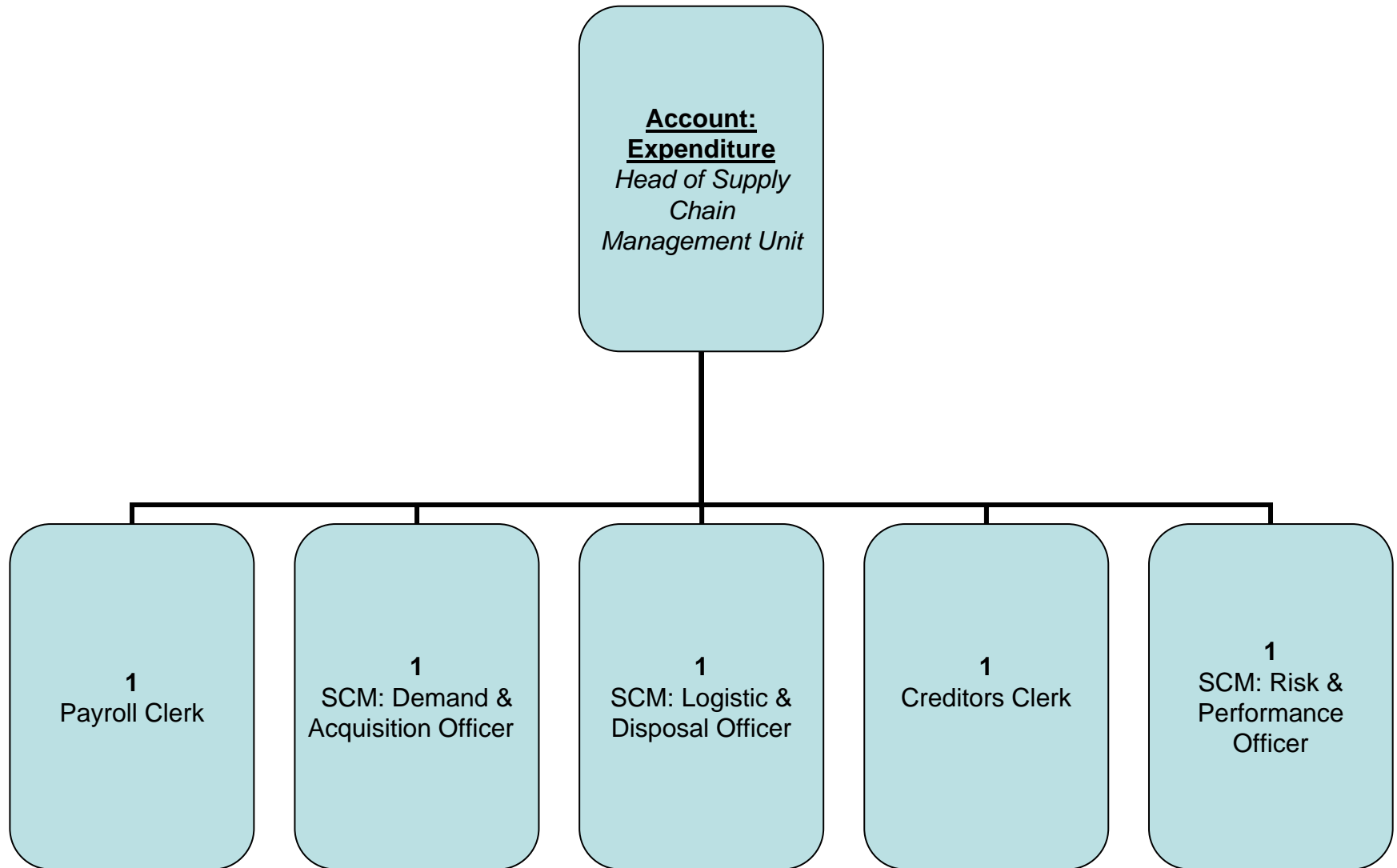
CORPORATE & SUPPORT SERVICES: Housing Technical Services



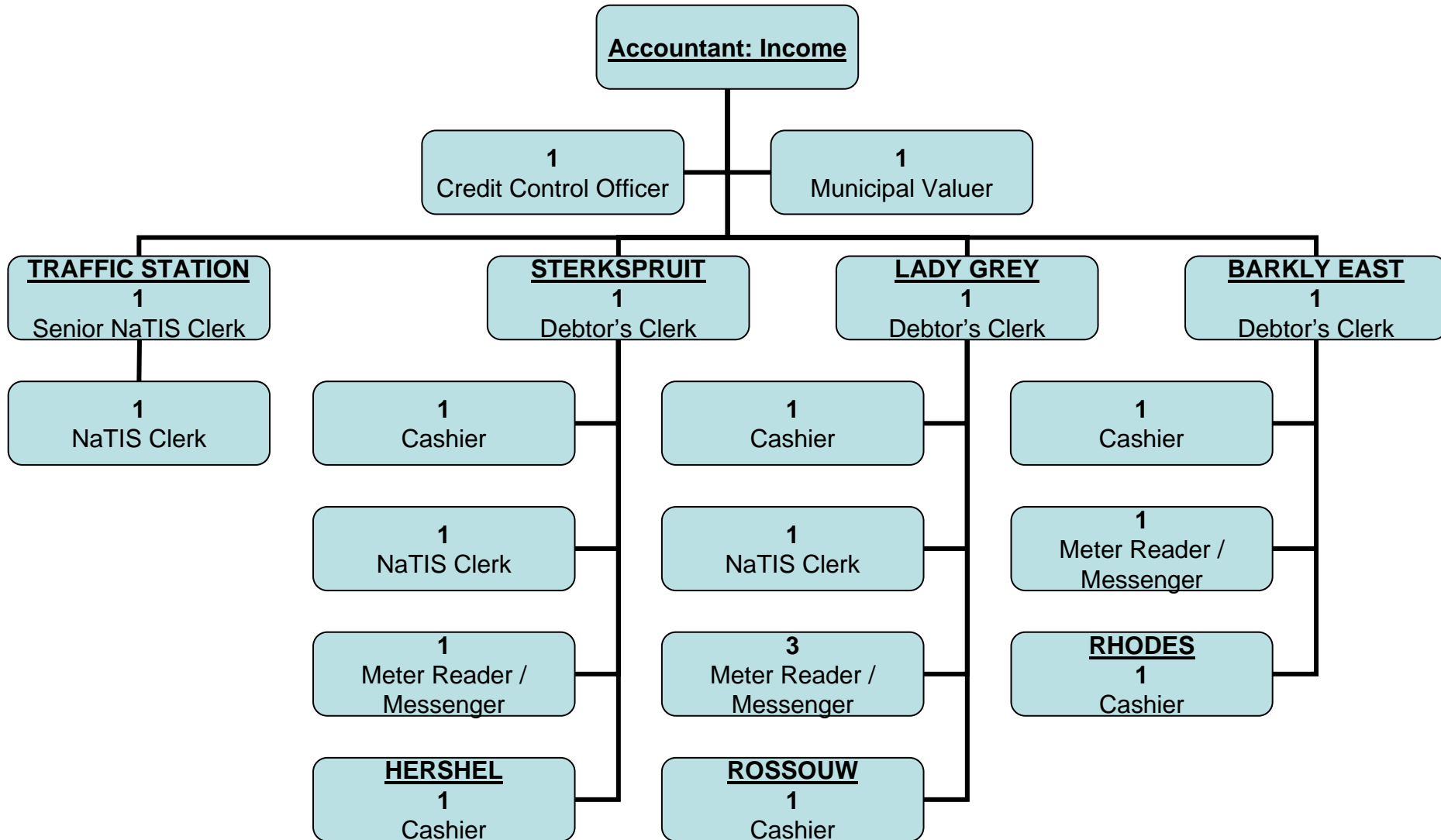
BUDGET & TREASURY OFFICE



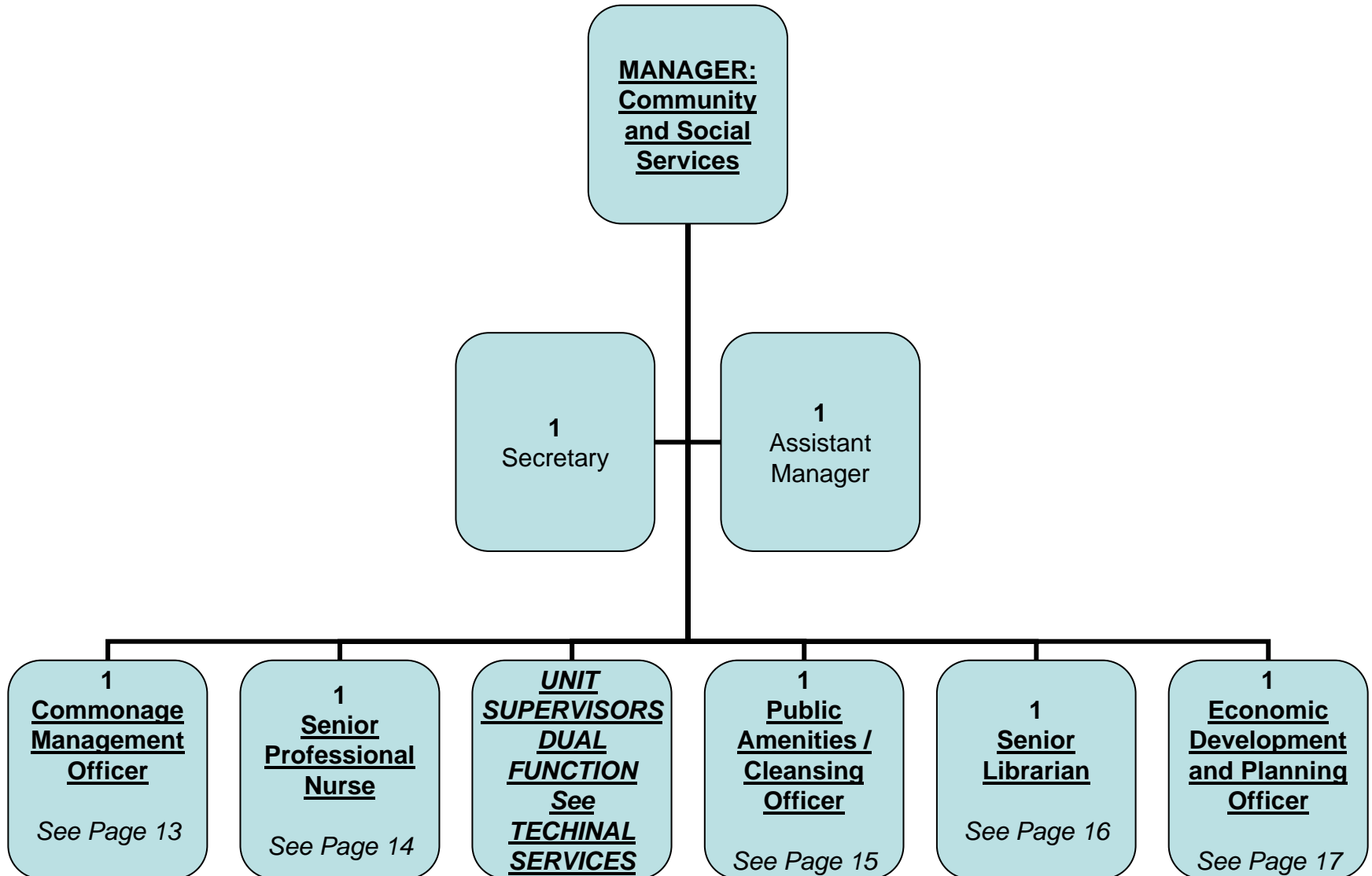
BTO: Expenditure (Supply Chain Management)



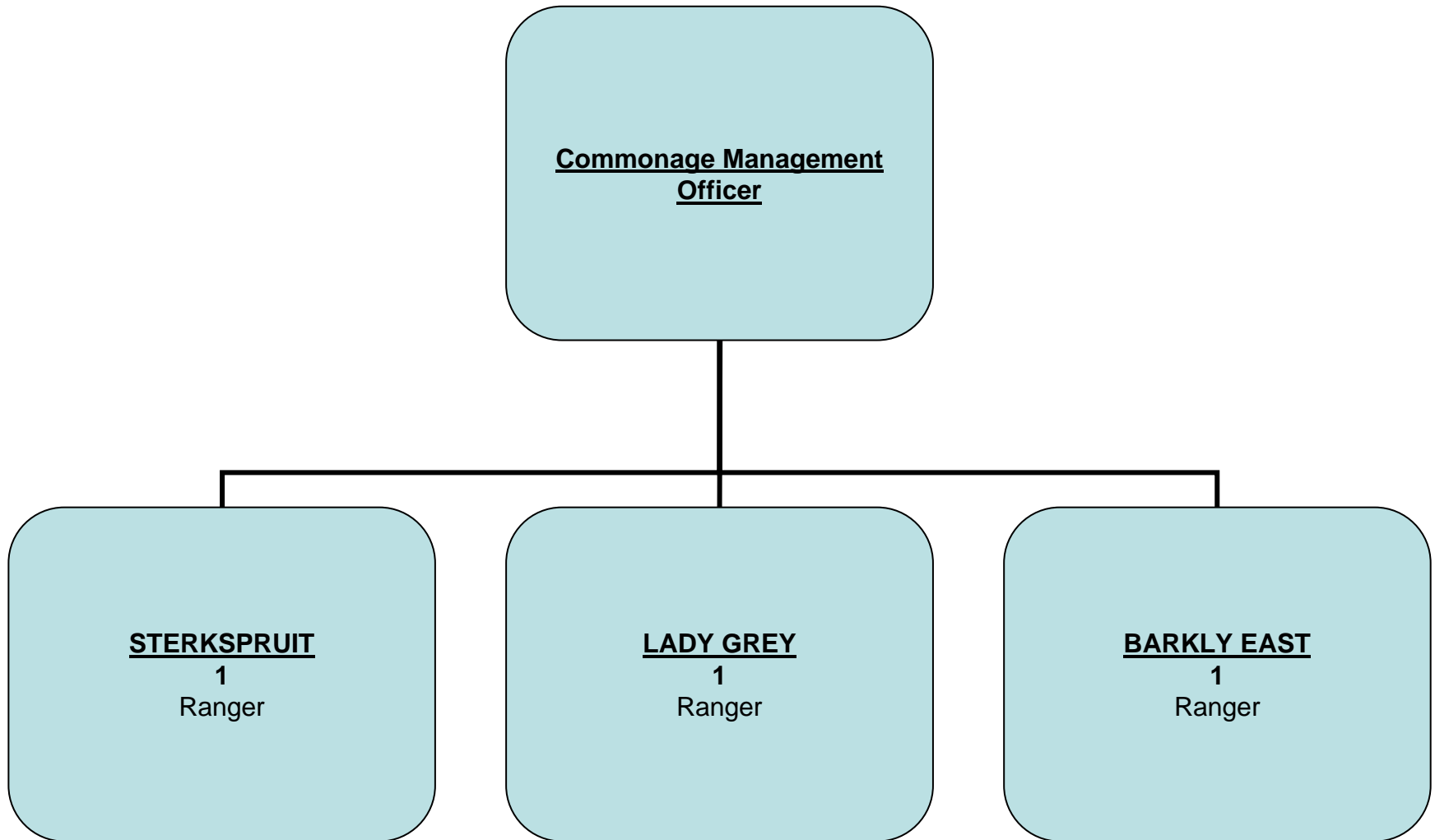
BTO: Revenue



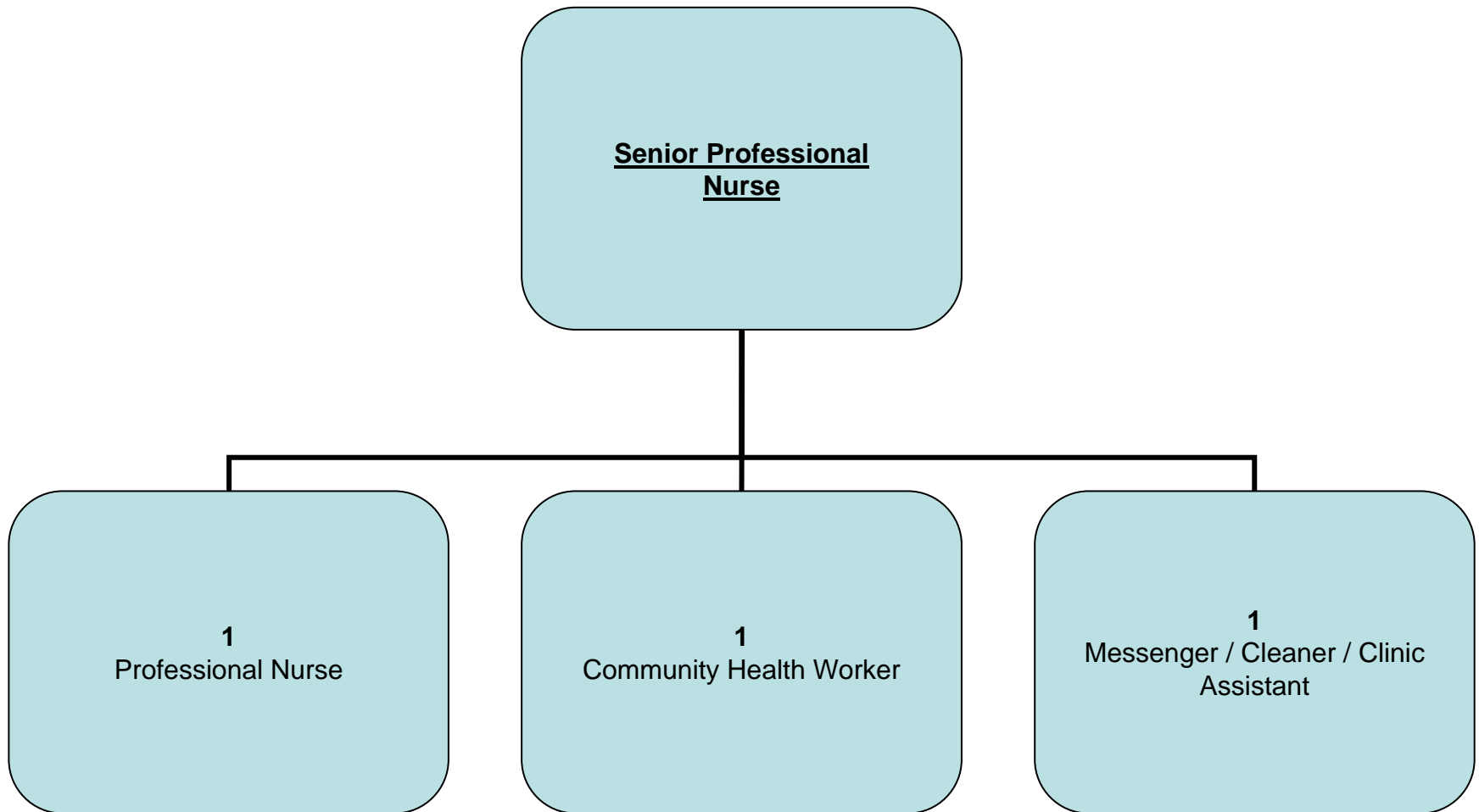
COMMUNITY & SOCIAL SERVICES



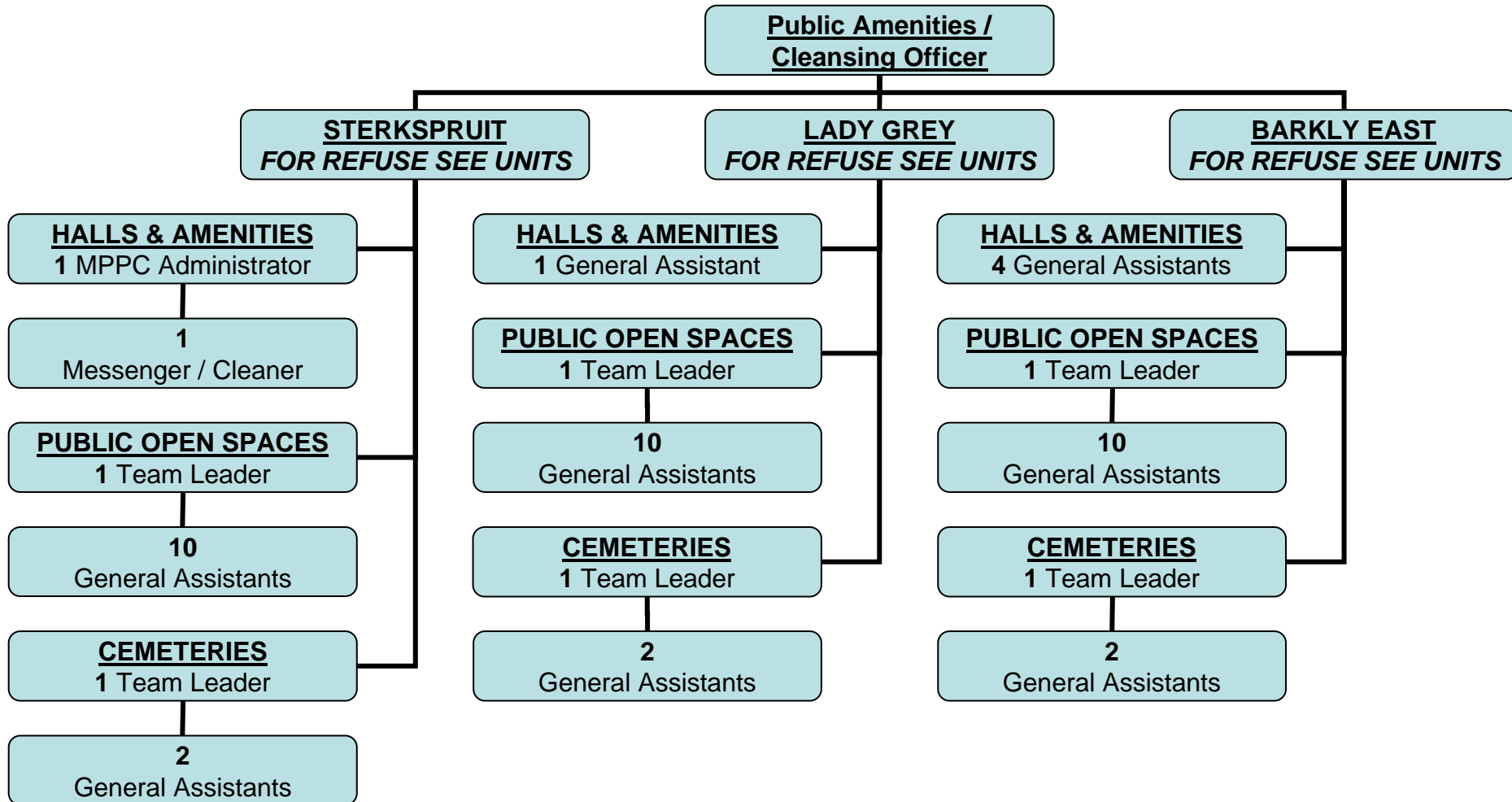
COMMUNITY & SOCIAL SERVICES: Commonage Management



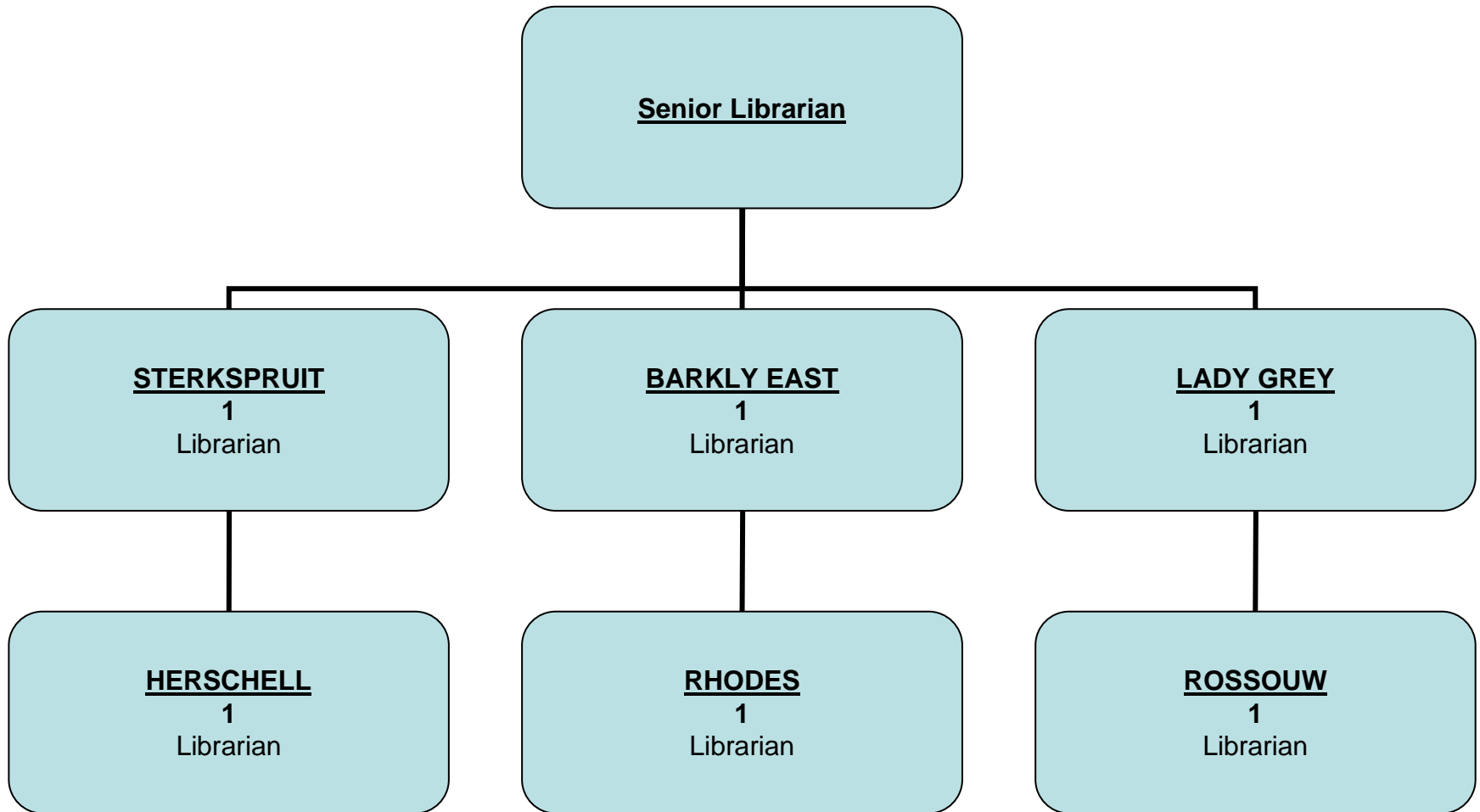
COMMUNITY & SOCIAL SERVICES: Health



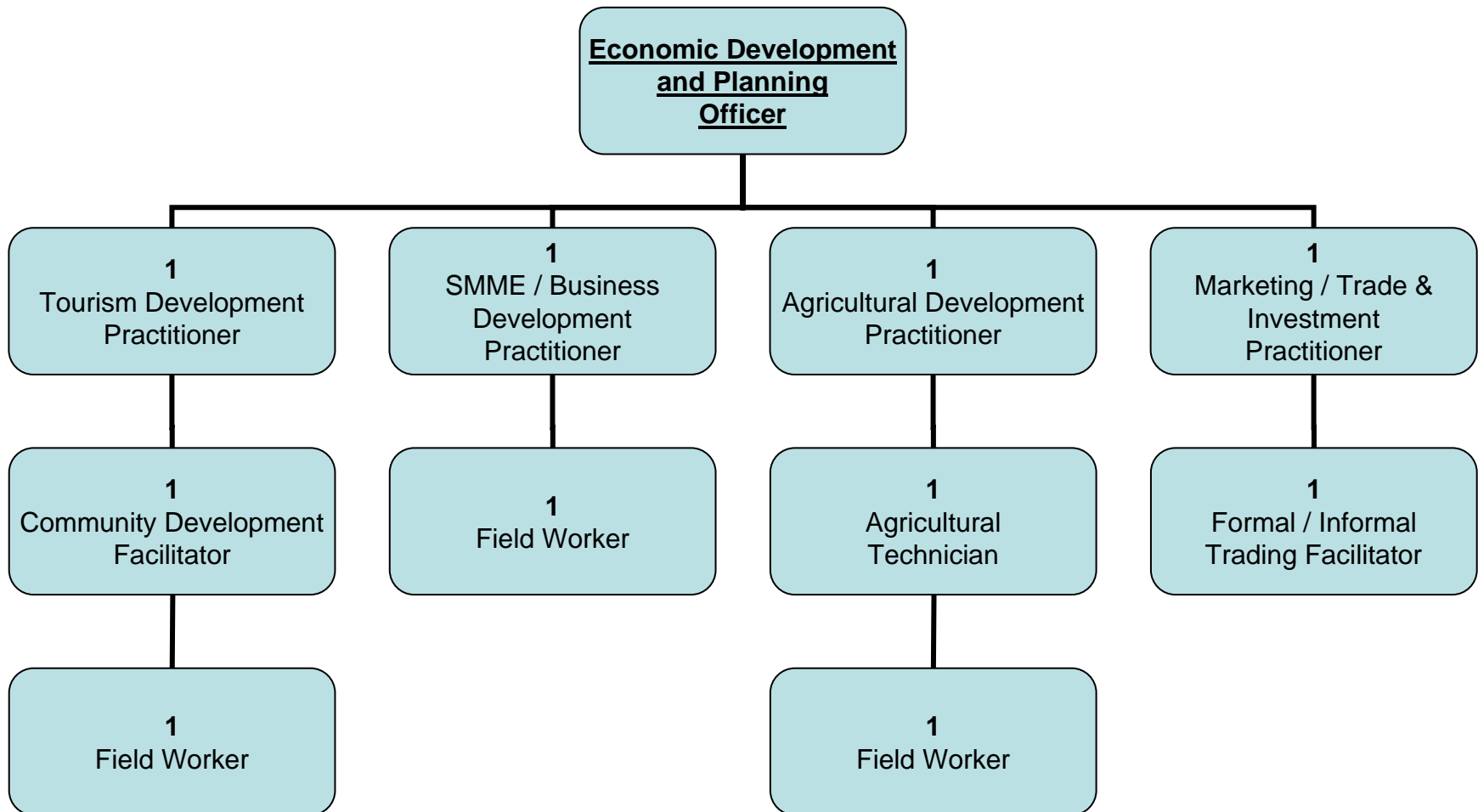
COMMUNITY & SOCIAL SERVICES: Cleansing & Public Amenities



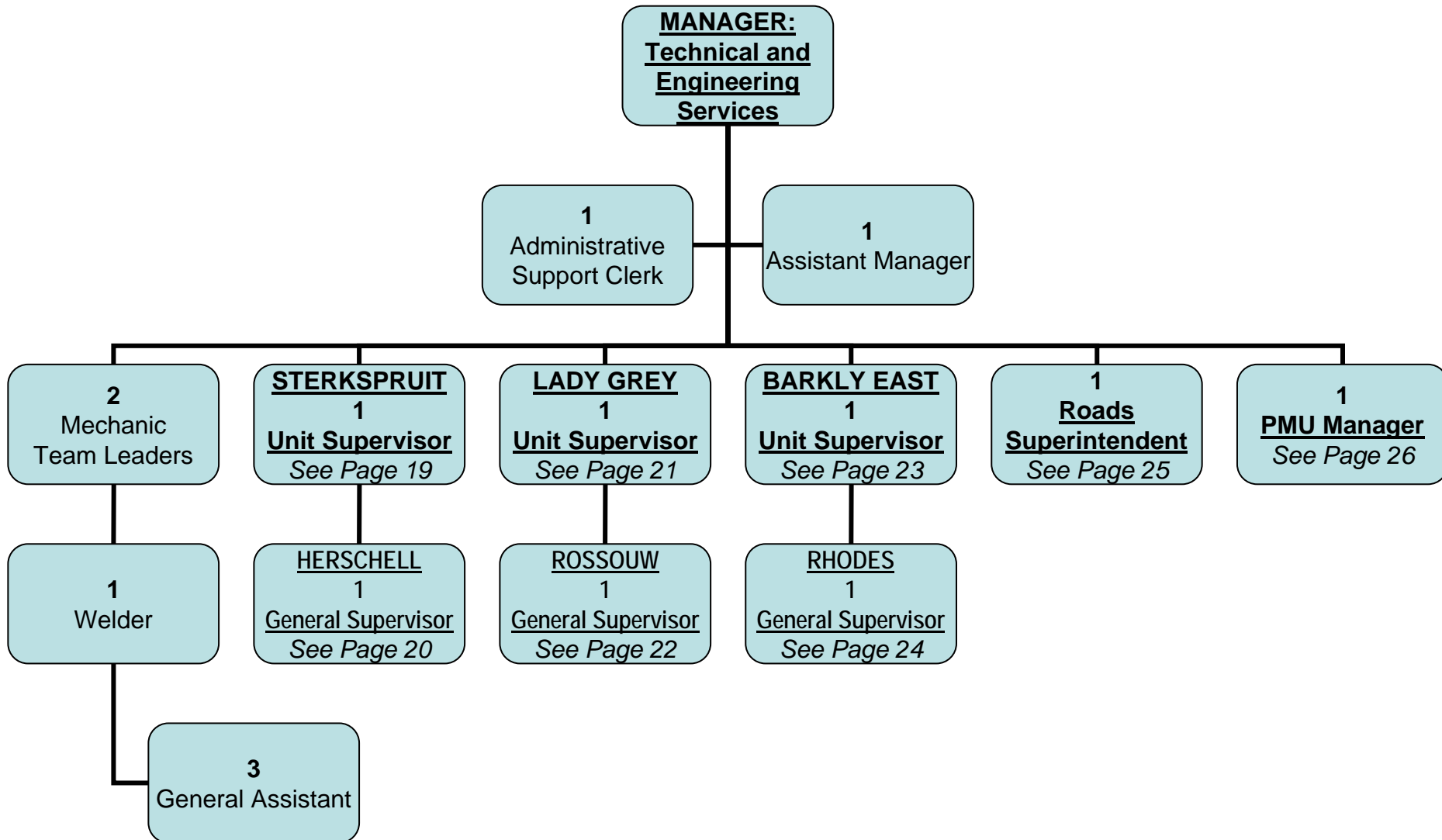
COMMUNITY & SOCIAL SERVICES: Libraries



COMMUNITY & SOCIAL SERVICES: Economic Development & Planning

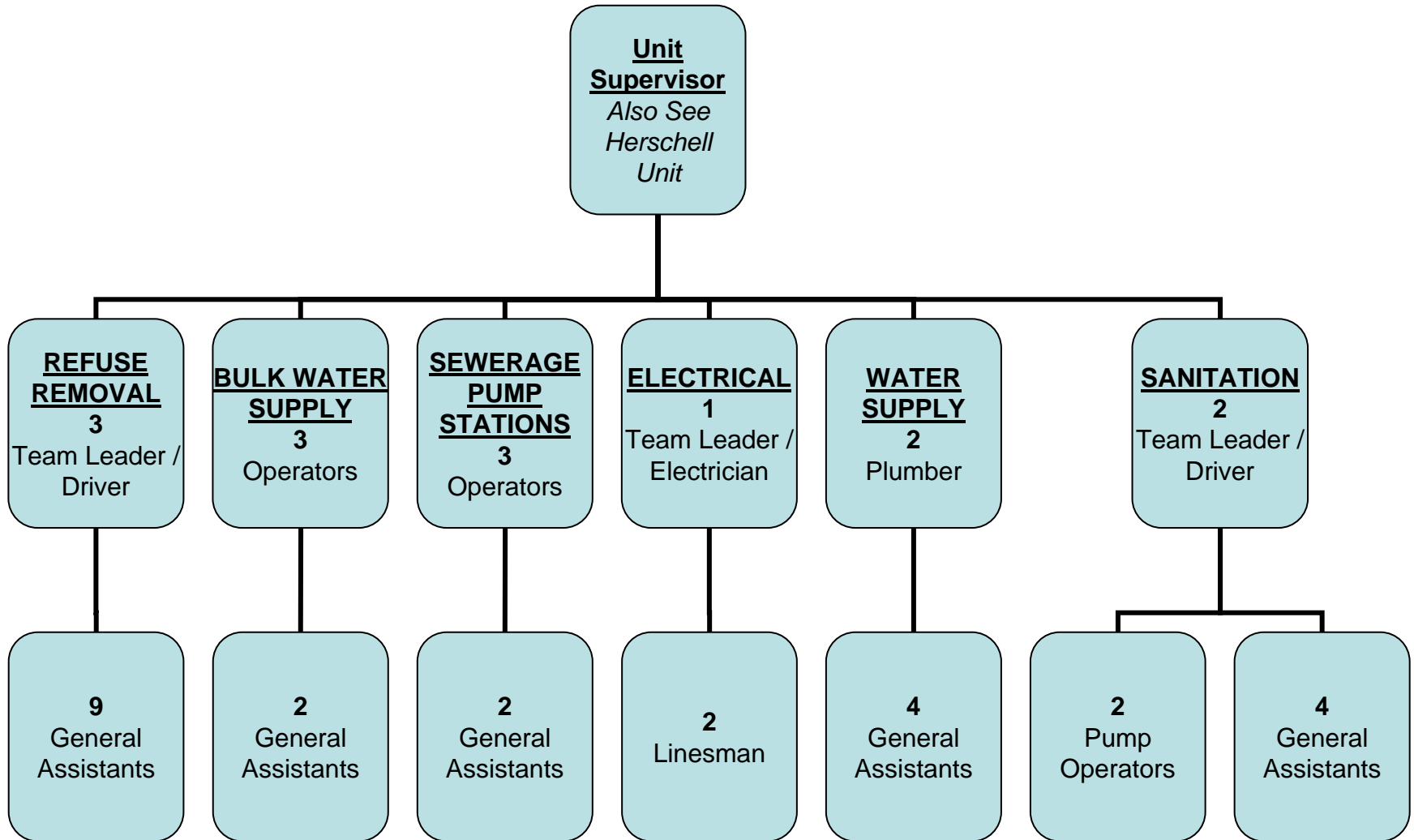


TECHNICAL & ENGINEERING SERVICES



TECHNICAL & ENGINEERING SERVICES:

Sterkspruit Unit



TECHNICAL & ENGINEERING SERVICES:

Herschell Unit

General Supervisor

REFUSE REMOVAL, CEMETERIES & PUBLIC OPEN SPACES

1

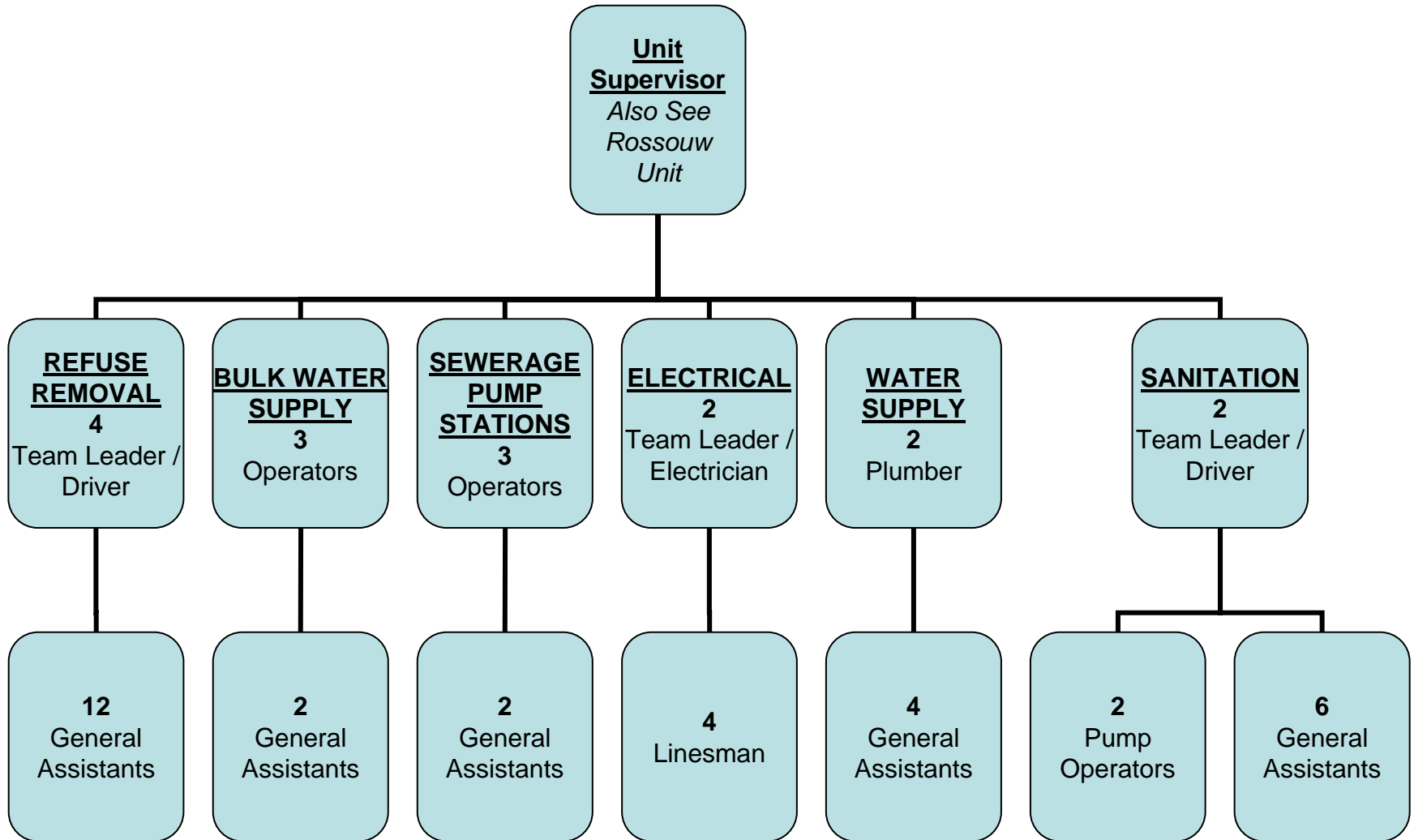
Team Leader / Driver

5

General Assistants

TECHNICAL & ENGINEERING SERVICES:

Lady Grey Unit



TECHNICAL & ENGINEERING SERVICES:

Rossouw Unit

General Supervisor

REFUSE REMOVAL, CEMETERIES & PUBLIC OPEN SPACES

1

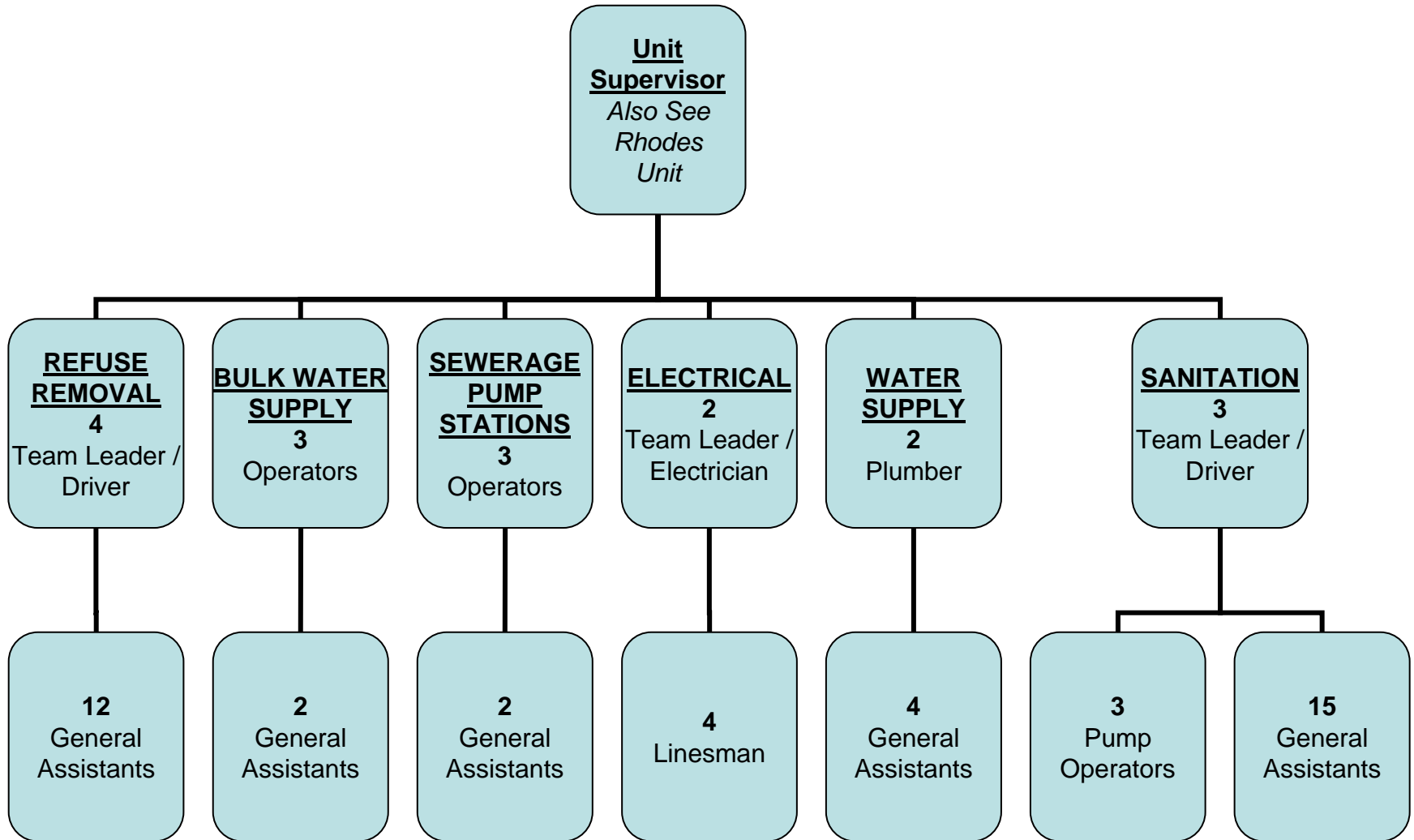
Team Leader / Driver

5

General Assistants

TECHNICAL & ENGINEERING SERVICES:

Barkly East Unit



TECHNICAL & ENGINEERING SERVICES:

Rhodes Unit

General Supervisor

WATER, SANITATION, REFUSE REMOVAL, CEMETERIES & PUBLIC OPEN SPACES

2

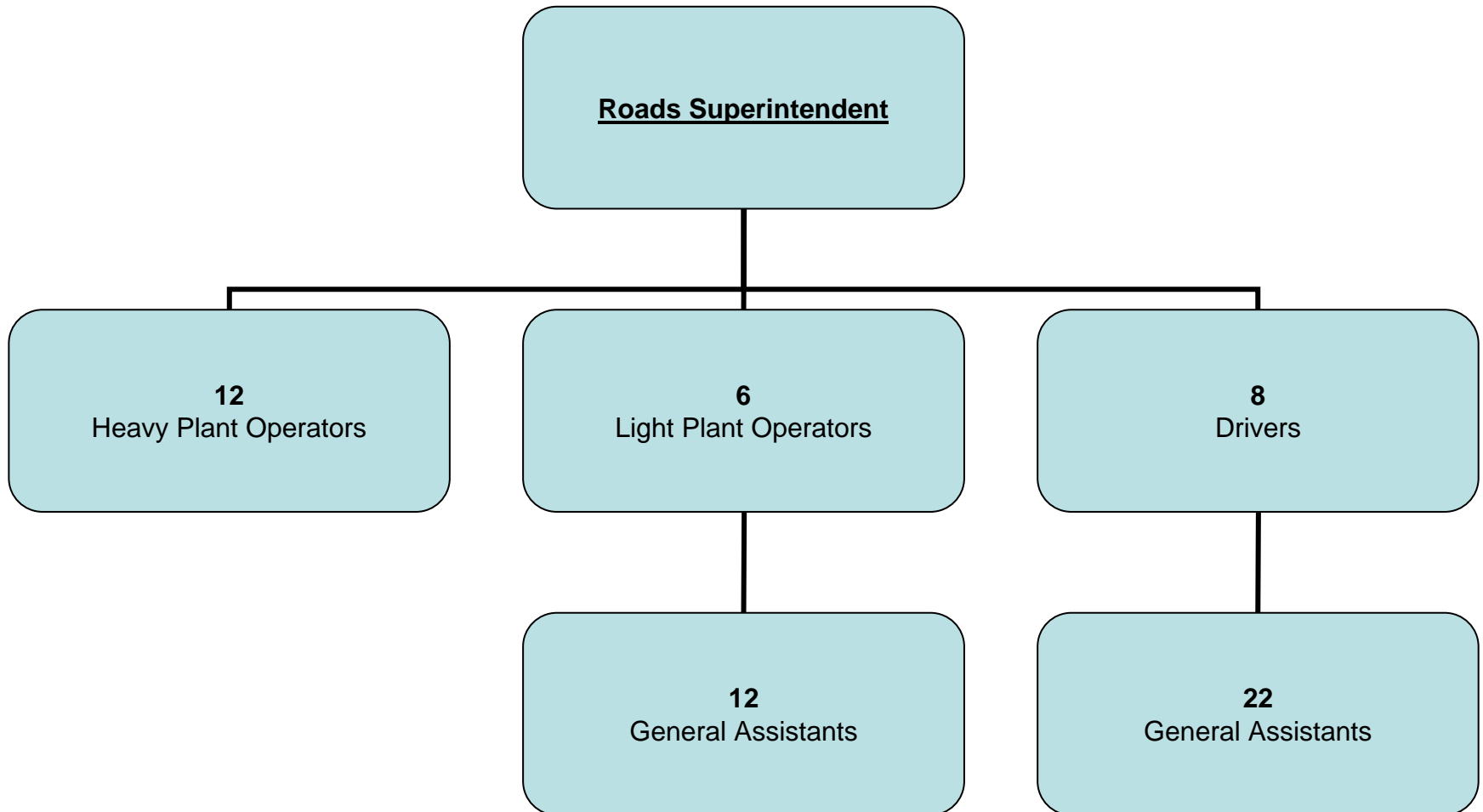
Team Leader / Driver

6

General Assistants

TECHNICAL & ENGINEERING SERVICES:

Roads Department



TECHNICAL & ENGINEERING SERVICES:

Project Management Unit

